

## Install and setup of Optiview IP cameras

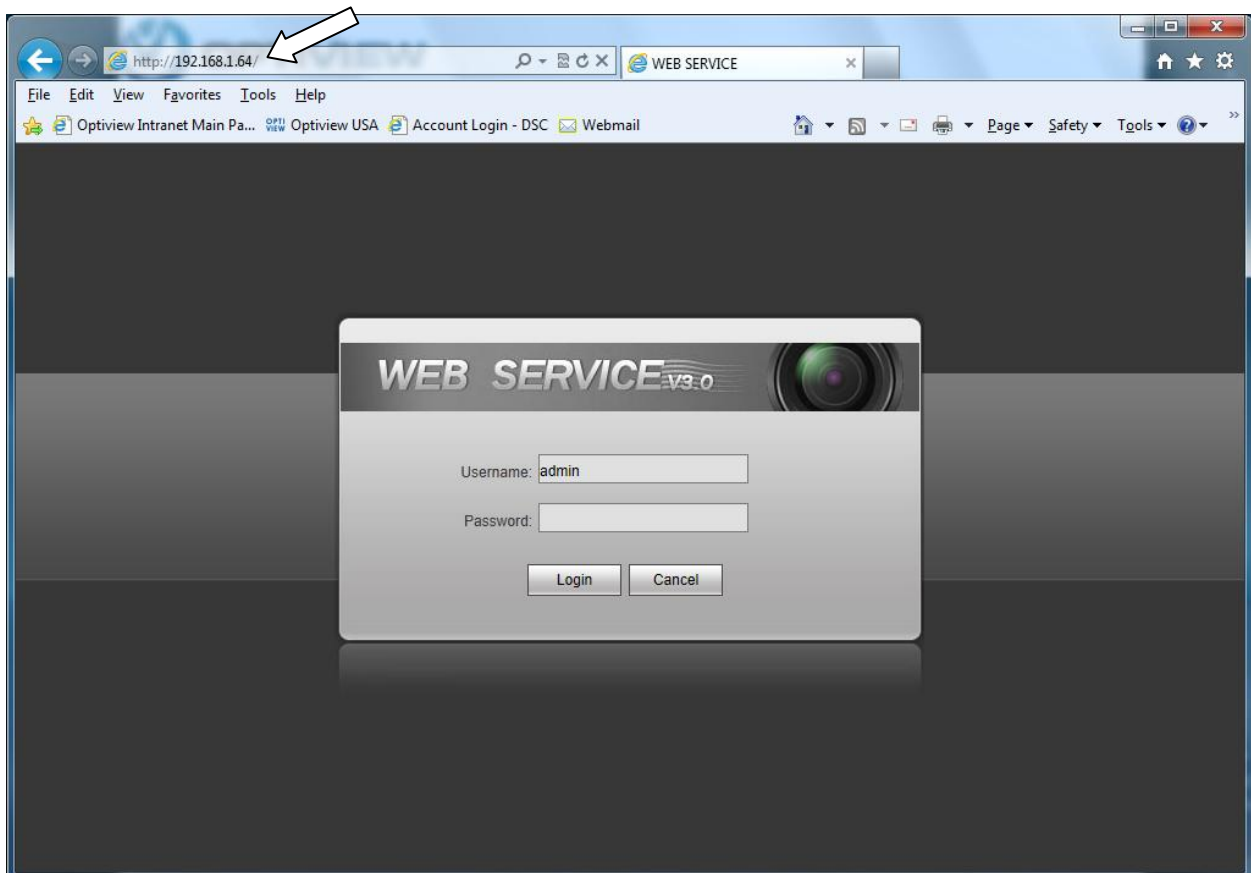
You will need a computer on set up the IP cameras, so the following are our first recommendations:

- a. If you will be setting up the IP cameras to a PC based DVR, make sure that PC DVR will be available to you and connected to the network/internet when you install the cameras.
- b. If you will be setting up the cameras on an embedded DVR, make sure you have a laptop with you when you go to the job site, OR you can pre-setup the cameras before you go to the job site. The embedded DVR also needs to be connected to the network/internet to be able to see the installed cameras.

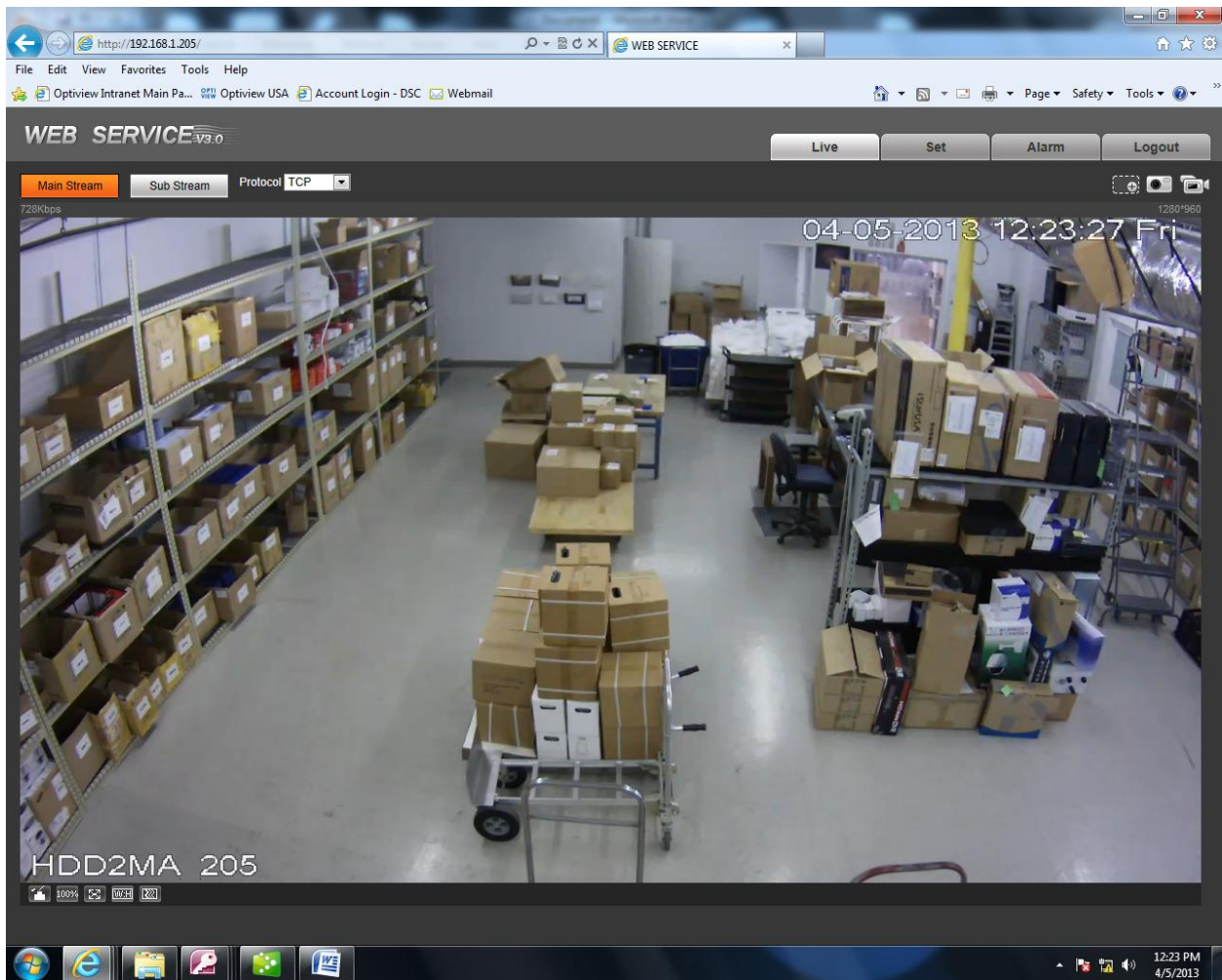
All Optiview IP cameras come preset with an assigned IP address (192.168.1.xx). You just need to plug in the camera to the proper power supply and connect it to the network/internet via RJ45 cable. Please note that the camera takes a few minutes to boot-up and allocate itself in the network.

- You can test if the camera is up and running by opening Internet Explorer and typing the camera's IP address in the address bar:

*(You can look for the IP address on the sticker on the camera or the sticker on the box)*



- Login using the default user name and password. **User: admin, Pass: admin**



After you log in you should be able to see the image feed from the camera.

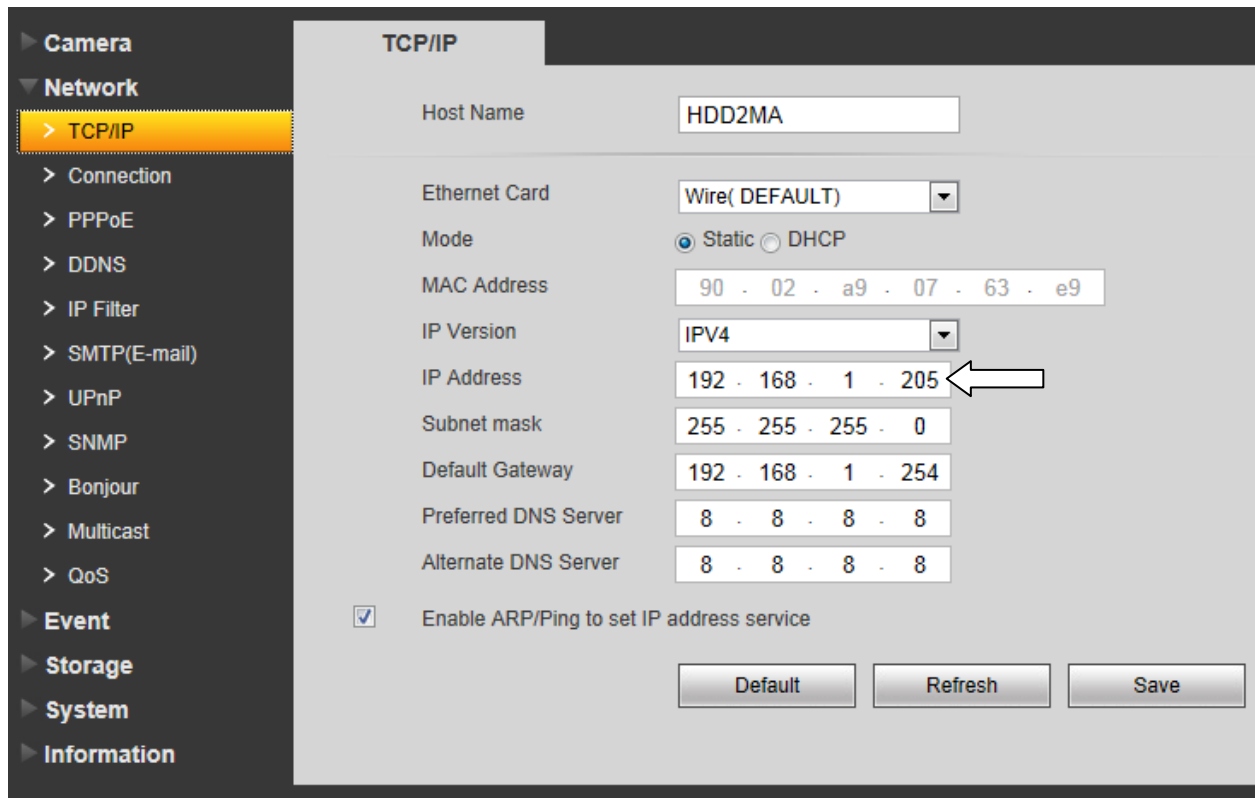
## Changing the Camera's IP Address and Port Number using Internet Explorer

If you wish to change the IP address, Port Number and other parameters of your IP camera you can use the camera's Internet Explorer interface to do so:

- To change the IP Address click on **Set(Setup)**

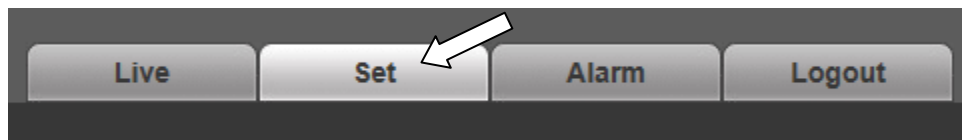


- Click on **Network** to expand the menu than click on **TCP/IP**.

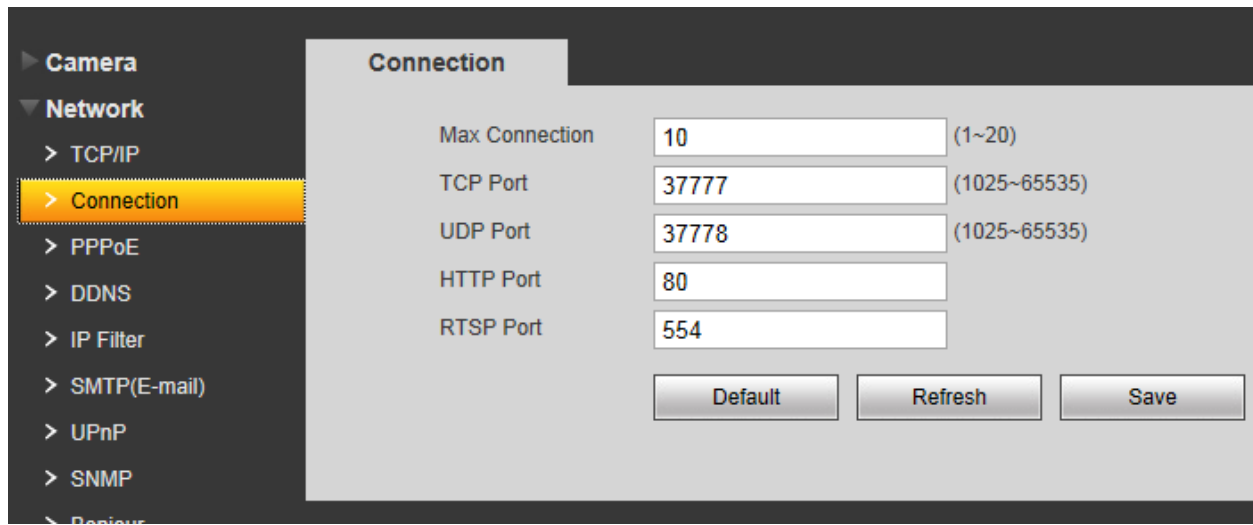


This will give you access to the IP settings of the camera. You can type the IP address you wish to use on the *IP Address* field than click save. You will need to logout and log back in for the changes to take effect.

- To change the Port Number click on **Set(Setup)**



- Click on **Network** to expand the menu than click on **Connection**.



Parameter	Value	Range
Max Connection	10	(1~20)
TCP Port	37777	(1025~65535)
UDP Port	37778	(1025~65535)
HTTP Port	80	
RTSP Port	554	

Buttons: Default, Refresh, Save

This will give you access to the Port Number settings of the camera. You can type the Port Numbers you wish to use than click save. You will need to logout and log back in for the changes to take effect.

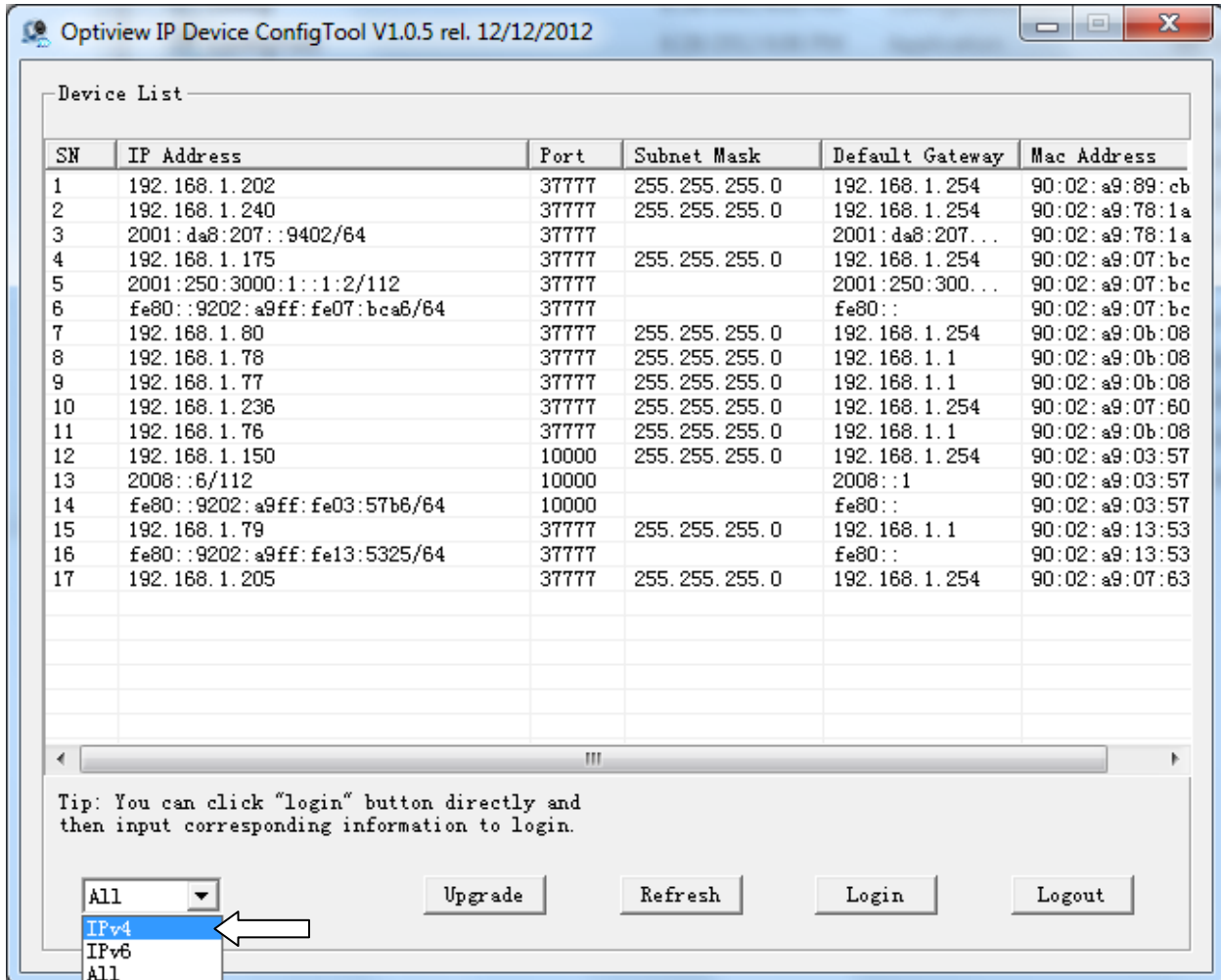
**\*\*\* Please note that if you are using IE to make these changes you can only use Port Numbers between 1025 – 9998 for web (HTTP) port and 1025-10000 for TCP port. \*\*\***

Several other parameters to configure you camera are available under the *Setup* menu, but they are beyond the scope of this quick guide.

## Changing the Camera's IP Address using Optiview's Config Tool

If you wish to change the IP address and other parameters of your IP camera you can also use **Optiview's IP Device Config Tool** that comes in the cd you have received with the camera.

- Launch the *Optiview IP Device Config Tool*
- On the drop down box at the bottom of the screen, select **IPv4**



Optiview IP Device ConfigTool V1.0.5 rel. 12/12/2012

Device List

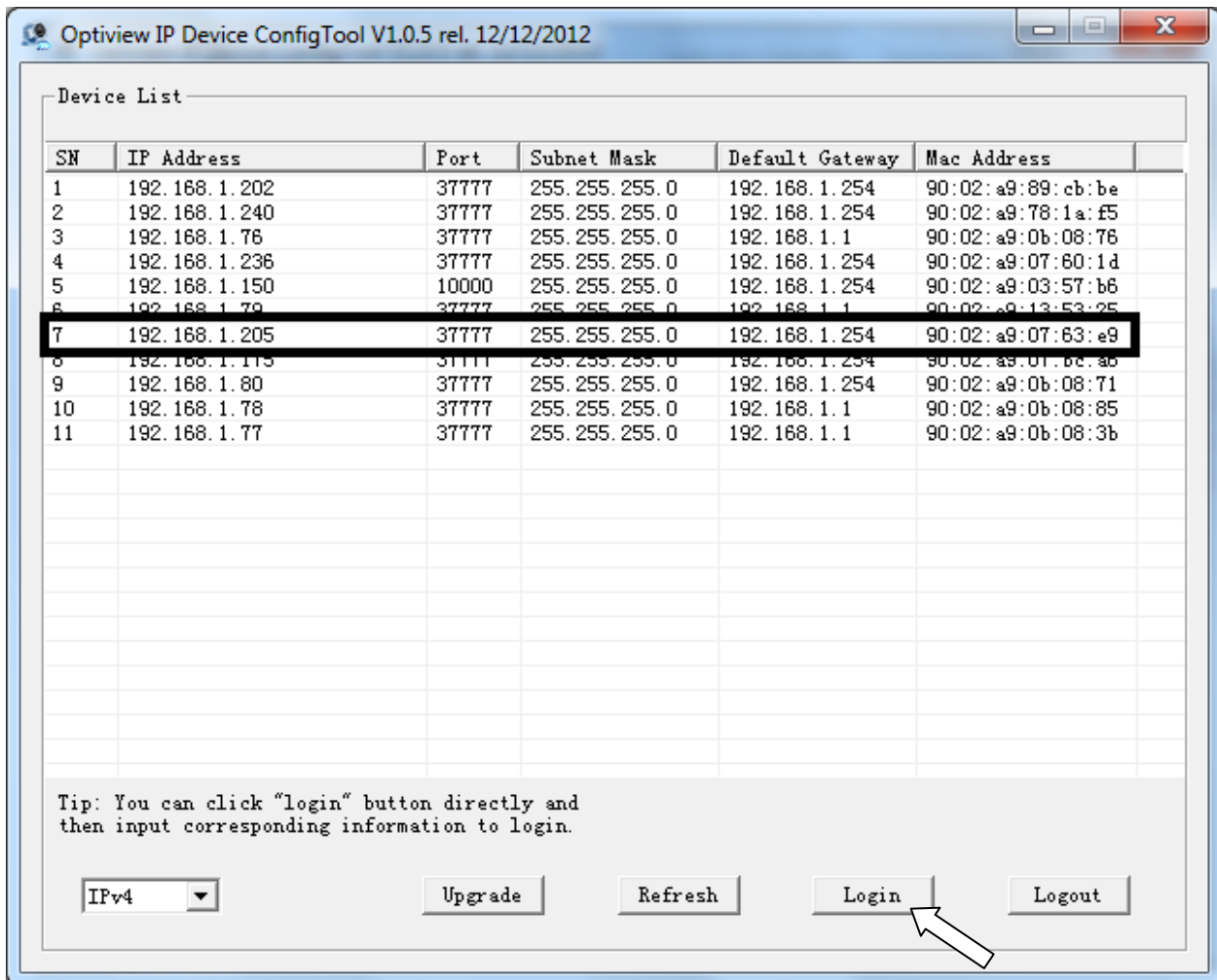
SN	IP Address	Port	Subnet Mask	Default Gateway	Mac Address
1	192.168.1.202	37777	255.255.255.0	192.168.1.254	90:02:a9:89:cb
2	192.168.1.240	37777	255.255.255.0	192.168.1.254	90:02:a9:78:1a
3	2001:da8:207::9402/64	37777		2001:da8:207...	90:02:a9:78:1a
4	192.168.1.175	37777	255.255.255.0	192.168.1.254	90:02:a9:07:bc
5	2001:250:3000:1::1:2/112	37777		2001:250:300...	90:02:a9:07:bc
6	fe80::9202:a9ff:fe07:bca6/64	37777		fe80::	90:02:a9:07:bc
7	192.168.1.80	37777	255.255.255.0	192.168.1.254	90:02:a9:0b:08
8	192.168.1.78	37777	255.255.255.0	192.168.1.1	90:02:a9:0b:08
9	192.168.1.77	37777	255.255.255.0	192.168.1.1	90:02:a9:0b:08
10	192.168.1.236	37777	255.255.255.0	192.168.1.254	90:02:a9:07:60
11	192.168.1.76	37777	255.255.255.0	192.168.1.1	90:02:a9:0b:08
12	192.168.1.150	10000	255.255.255.0	192.168.1.254	90:02:a9:03:57
13	2008::6/112	10000		2008::1	90:02:a9:03:57
14	fe80::9202:a9ff:fe03:57b6/64	10000		fe80::	90:02:a9:03:57
15	192.168.1.79	37777	255.255.255.0	192.168.1.1	90:02:a9:13:53
16	fe80::9202:a9ff:fe13:5325/64	37777		fe80::	90:02:a9:13:53
17	192.168.1.205	37777	255.255.255.0	192.168.1.254	90:02:a9:07:63

Tip: You can click "login" button directly and then input corresponding information to login.

All  
**IPv4**  
 IPv6  
 All

Upgrade Refresh Login Logout

- Click on refresh until you see your camera's IP address listed. *The best way to make sure what IP address is assigned to that camera is to compare the MAC address of the camera (found on the silver sticker on the camera) to the MAC address showing next to the IP on the screen; those two numbers need to match.*



Optiview IP Device ConfigTool V1.0.5 rel. 12/12/2012

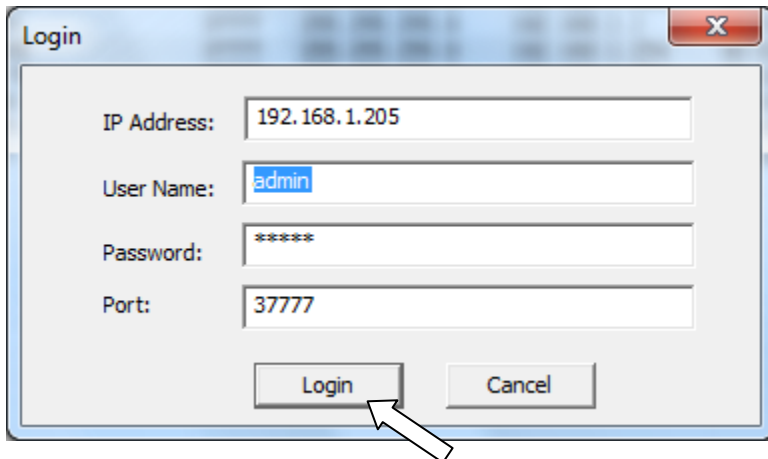
Device List

SN	IP Address	Port	Subnet Mask	Default Gateway	Mac Address
1	192.168.1.202	37777	255.255.255.0	192.168.1.254	90:02:a9:89:cb:be
2	192.168.1.240	37777	255.255.255.0	192.168.1.254	90:02:a9:78:1a:f5
3	192.168.1.76	37777	255.255.255.0	192.168.1.1	90:02:a9:0b:08:76
4	192.168.1.236	37777	255.255.255.0	192.168.1.254	90:02:a9:07:60:1d
5	192.168.1.150	10000	255.255.255.0	192.168.1.254	90:02:a9:03:57:b6
6	192.168.1.79	37777	255.255.255.0	192.168.1.1	90:02:a9:13:53:25
7	192.168.1.205	37777	255.255.255.0	192.168.1.254	90:02:a9:07:63:e9
8	192.168.1.113	37777	255.255.255.0	192.168.1.254	90:02:a9:01:6e:ab
9	192.168.1.80	37777	255.255.255.0	192.168.1.254	90:02:a9:0b:08:71
10	192.168.1.78	37777	255.255.255.0	192.168.1.1	90:02:a9:0b:08:85
11	192.168.1.77	37777	255.255.255.0	192.168.1.1	90:02:a9:0b:08:3b

Tip: You can click "login" button directly and then input corresponding information to login.

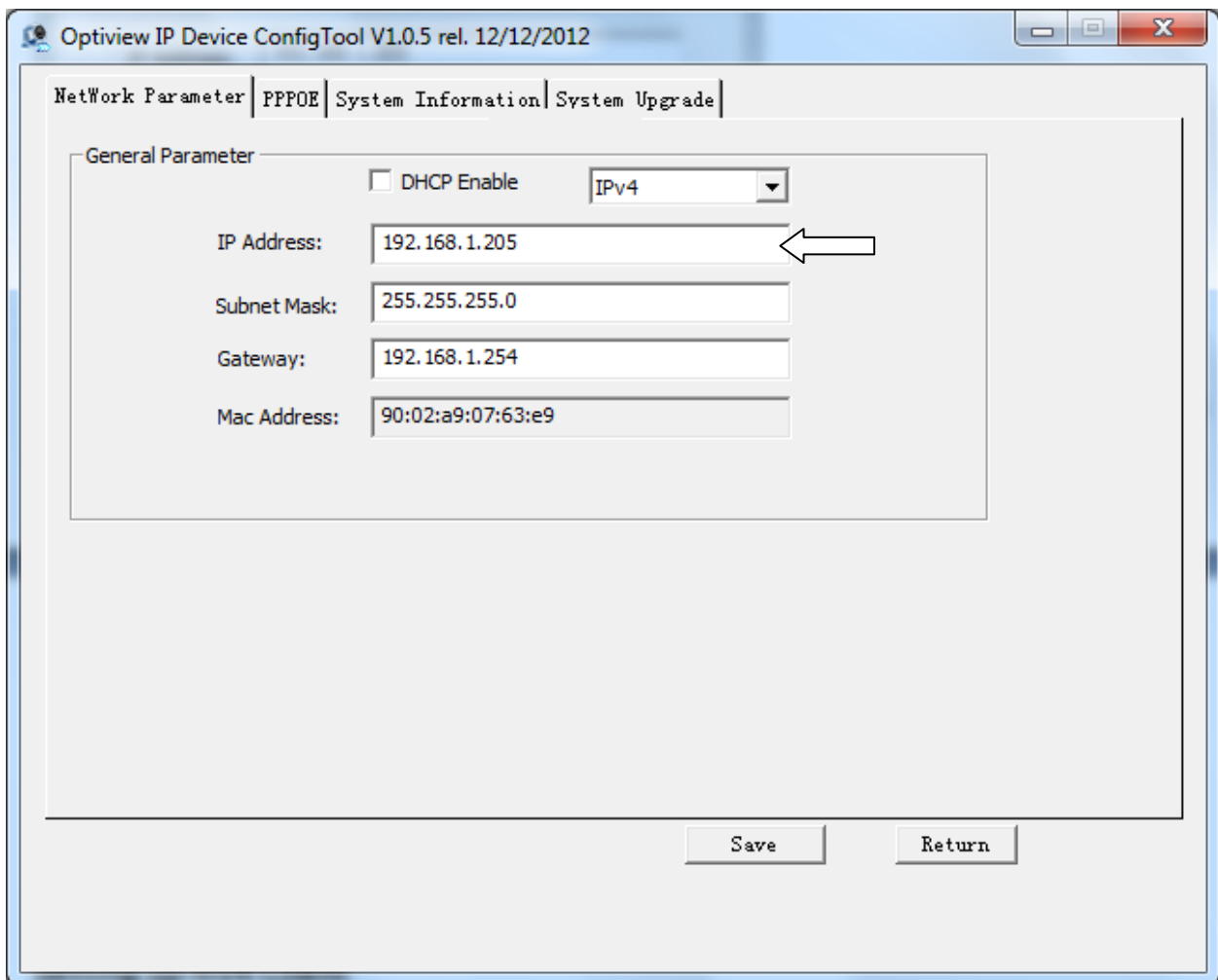
IPv4

- Click on the camera's IP Address to highlight it than click **Log in**. On the screen that pops up, click log in again.



A login dialog box titled "Login" with a close button (X) in the top right corner. It contains four input fields: "IP Address:" with the value "192.168.1.205", "User Name:" with the value "admin", "Password:" with the value "\*\*\*\*\*", and "Port:" with the value "37777". At the bottom, there are two buttons: "Login" and "Cancel". A white arrow points to the "Login" button.

- The next screen will give you access to the IP settings of the camera. You can type the IP address you wish to use on the **IP Address** field than click save.



A screenshot of the "Optiview IP Device ConfigTool V1.0.5 rel. 12/12/2012" application window. The window has a title bar with standard Windows controls. Below the title bar, there are four tabs: "Network Parameter", "PPPOE", "System Information", and "System Upgrade". The "Network Parameter" tab is selected. Inside the main area, there is a "General Parameter" section. It contains a checkbox for "DHCP Enable" which is unchecked, and a dropdown menu for "IPv4". Below these are five input fields: "IP Address:" with the value "192.168.1.205", "Subnet Mask:" with the value "255.255.255.0", "Gateway:" with the value "192.168.1.254", and "Mac Address:" with the value "90:02:a9:07:63:e9". A white arrow points to the "IP Address" field. At the bottom of the window, there are two buttons: "Save" and "Return".

Once you get a message that it saved successfully, just click **OK** and it will go back to the list of devices. Your camera will be listed with the new IP address.

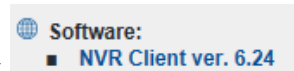
## Setting up NVR Client

NVR client is Optiview's desktop application that lets you remote connect to embedded DVRs, PC-Based DVRs and IP cameras.

To download NVR Client you can go to the following links:

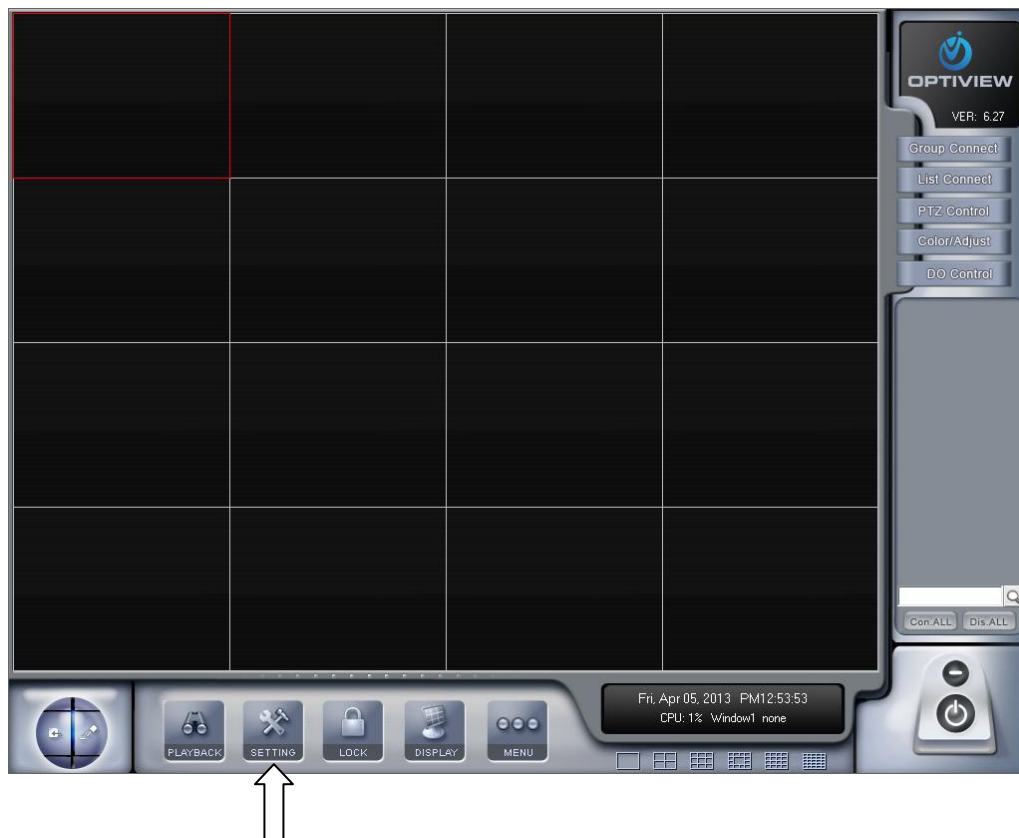
- For PC-Based DVR: <http://optiviewusa.com/support-dvr-vrpc.aspx>
- For Embedded DVRs: <http://optiviewusa.com/support-dvr-vrem.aspx>  
*(For IP cameras the NVR client Software can be downloaded from any of the two links above)*

- On the webpage, under the *Software* menu, click on *NVR Client Version x.xx* and save the file to your computer.
- After the download is completed, uncompress the file (unzip it).
- Go to the folder you just unzipped and double click the installation file **NVR Client.exe**
- Follow the prompts until the installation is complete.



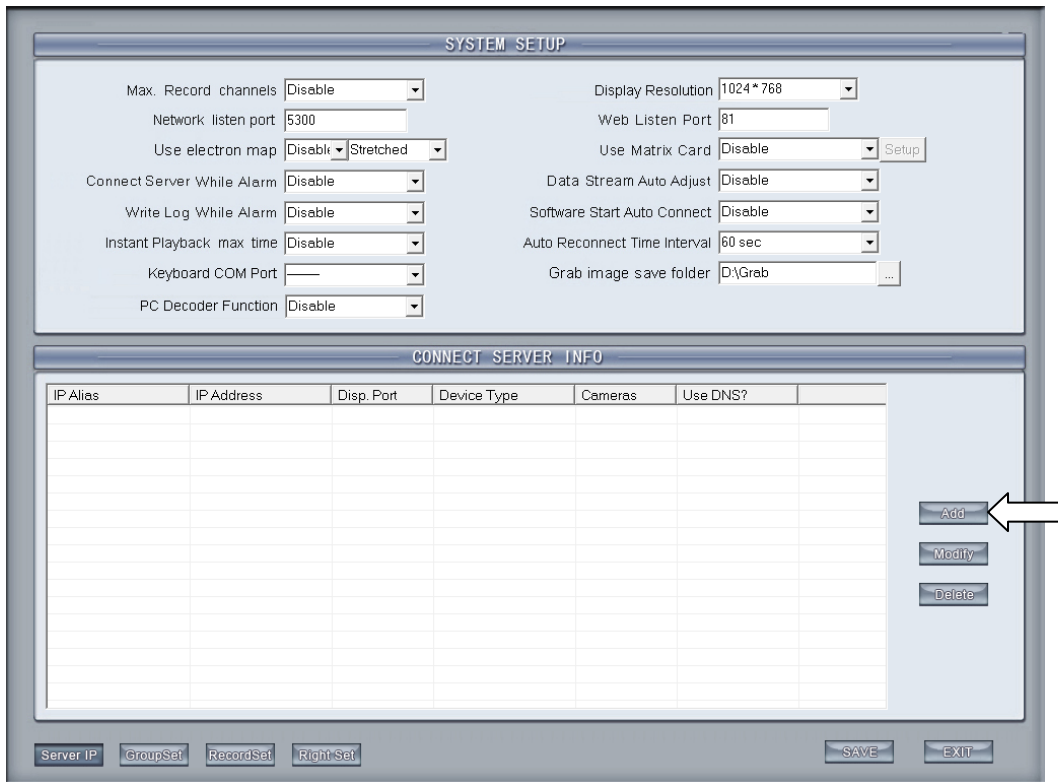
A desktop shortcut will be created. Double click it to open the app.

- Click on settings.





- Click on ADD to add a new device (same concept works for adding IP cameras and DVRs)



**SYSTEM SETUP**

Max. Record channels	Disable	Display Resolution	1024*768
Network listen port	5300	Web Listen Port	81
Use electron map	Disable Stretched	Use Matrix Card	Disable Setup
Connect Server While Alarm	Disable	Data Stream Auto Adjust	Disable
Write Log While Alarm	Disable	Software Start Auto Connect	Disable
Instant Playback max time	Disable	Auto Reconnect Time Interval	60 sec
Keyboard COM Port		Grab image save folder	D:\Grab
PC Decoder Function	Disable		

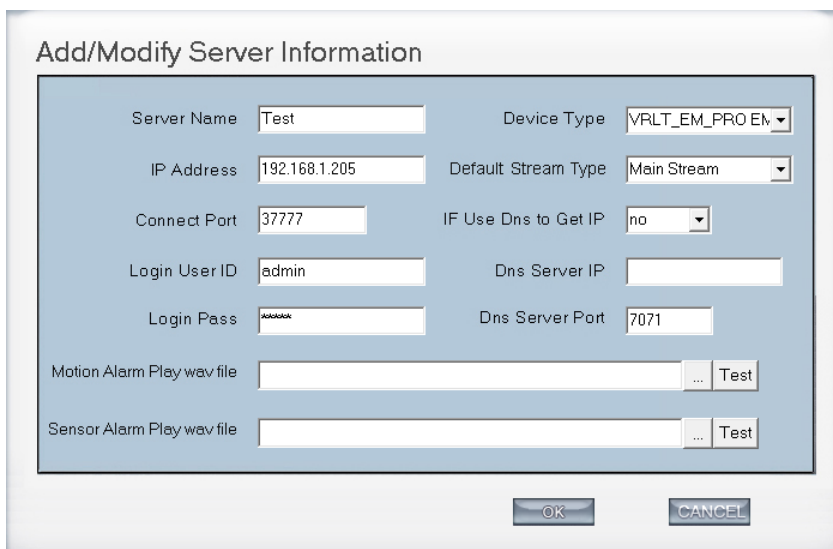
**CONNECT SERVER INFO**

IP Alias	IP Address	Disp. Port	Device Type	Cameras	Use DNS?

Buttons: Add, Modify, Delete

Server IP GroupSet RecordSet Right-Set SAVE EXIT

- Enter your IP camera information on the fields shown and click **OK**.  
Make sure to choose *VRLT\_EM\_PRO EMDVR* on the *Device Type* drop down box.



**Add/Modify Server Information**

Server Name	Test	Device Type	VRLT_EM_PRO EM
IP Address	192.168.1.205	Default Stream Type	Main Stream
Connect Port	37777	IF Use Dns to Get IP	no
Login User ID	admin	Dns Server IP	
Login Pass	*****	Dns Server Port	7071
Motion Alarm Play wav file			Test
Sensor Alarm Play wav file			Test

OK CANCEL

- A list of the added devices will show up. Repeat the above process until you have added all the cameras/DVRs you want. Click **SAVE** then click **EXIT**.

**SYSTEM SETUP**

Max. Record channels	Disable	Display Resolution	1024 * 768
Network listen port	5300	Web Listen Port	81
Use electron map	Disable Stretched	Use Matrix Card	Disable Setup
Connect Server While Alarm	Disable	Data Stream Auto Adjust	Disable
Write Log While Alarm	Disable	Software Start Auto Connect	Disable
Instant Playback max time	Disable	Auto Reconnect Time Interval	60 sec
Keyboard COM Port	---	Grab image save folder	D:\Grab
PC Decoder Function	Disable		

**CONNECT SERVER INFO**

IP Alias	IP Address	Disp. Port	Device Type	Cameras	Use DNS?
Shipping	192.168.1.205	37777	VRLT_EM_PRO E...	1	no

Add

Modify

Delete

Server IP    Group Set    Record Set    Right Set    SAVE    EXIT

- A list of the devices added will show on the right hand column



- Click on the + (plus) sign to expand the list of cameras



- You can double click the camera name or drag and drop it to the window you wish to see it.

