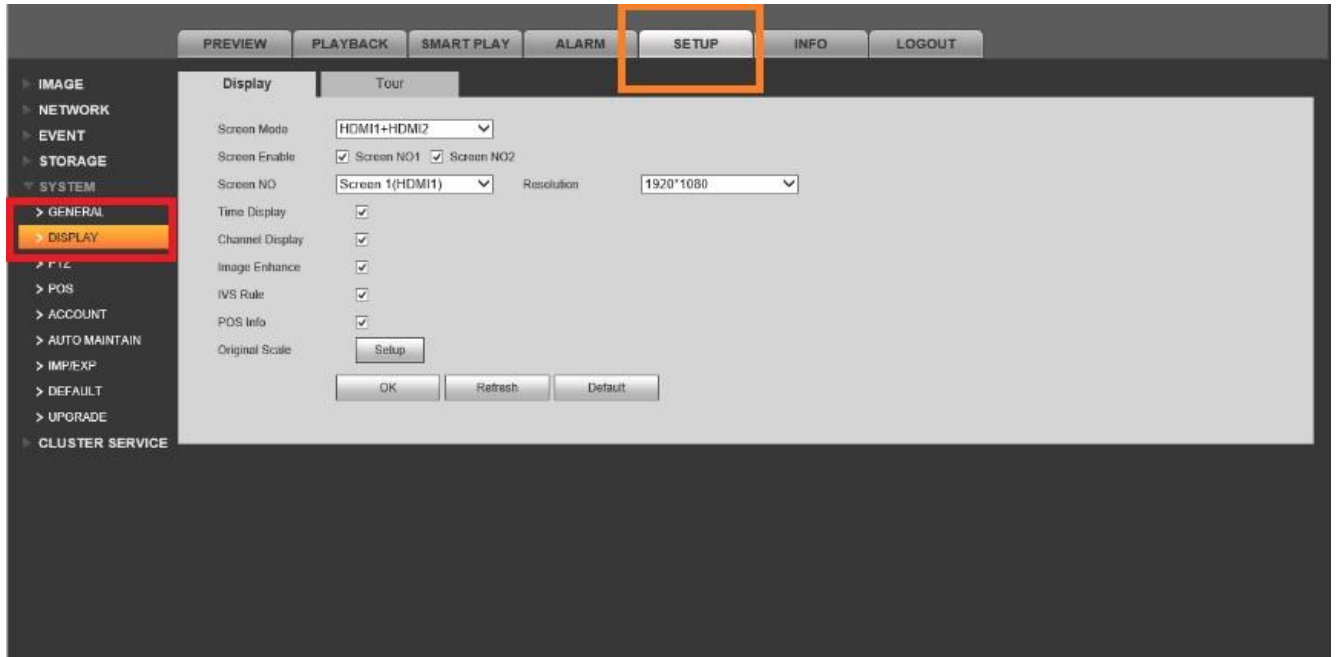


## Advanced Dual HDMI Monitor Setup

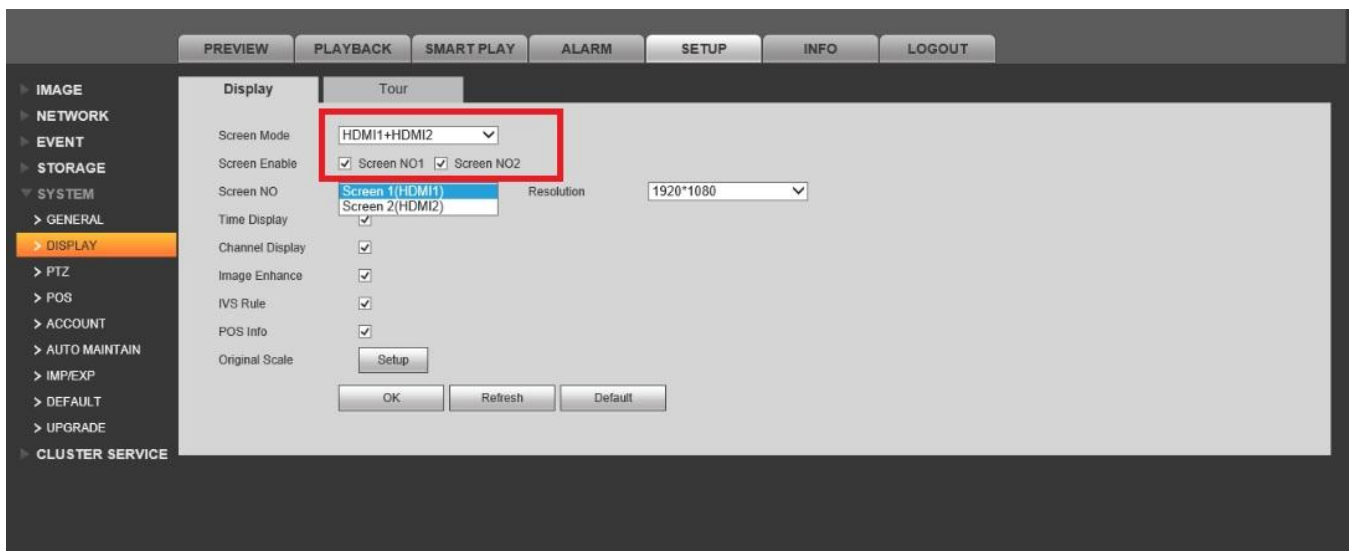
**Step 1.** Log in to WebService.

Sign here: \_\_\_\_\_

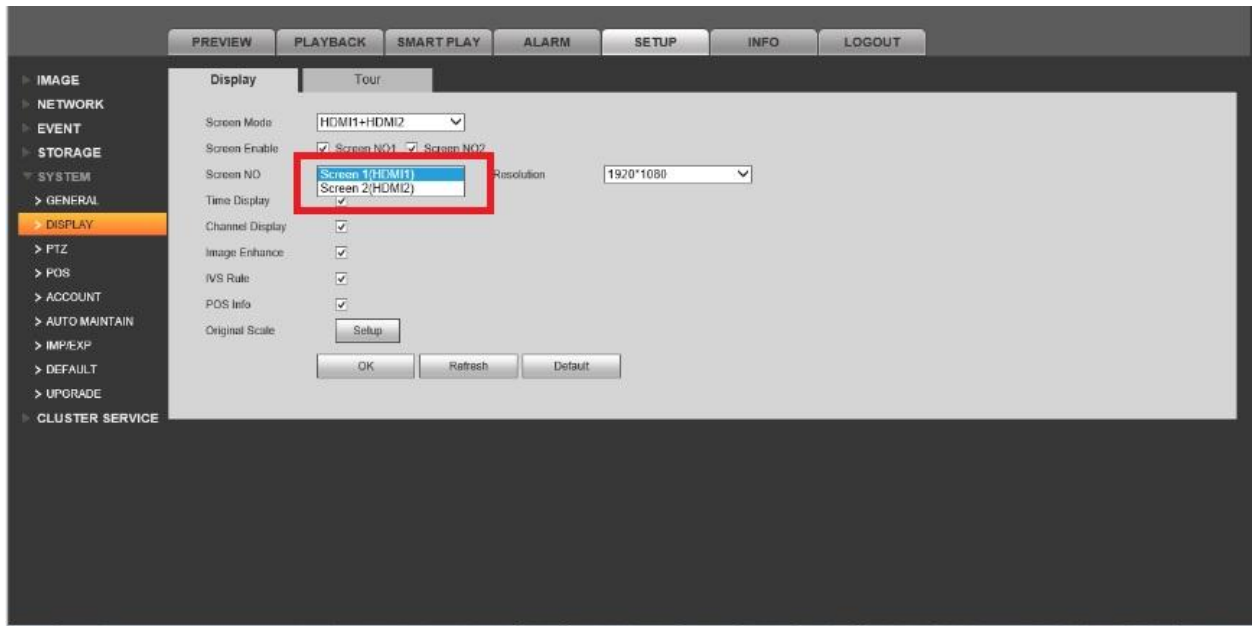
**Step 2.** Select Set up tab → Display



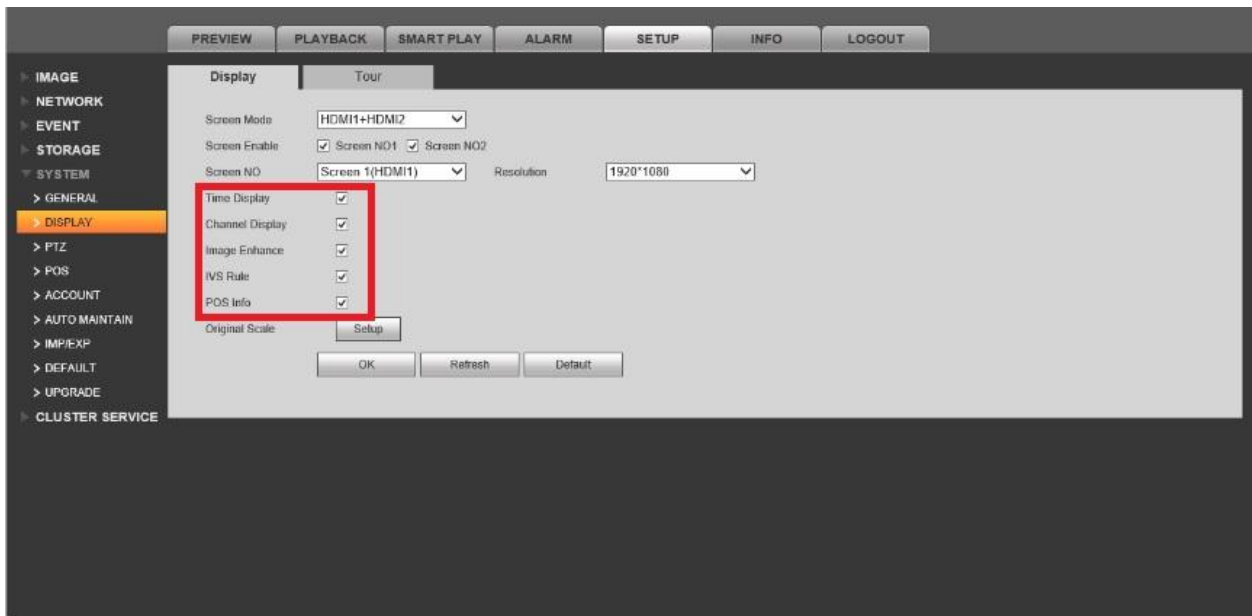
**Step 3.** Select HDMI 1 + HDMI 2 → Check screen enable 1 and 2. **Note :** This will only show as a selection if you have both HDMI1 and 2 plugged into 2 monitors



**Step 4.** Select screen 1 or 2 . This will determine which screen will show features like IVS Rule, POS info etc.

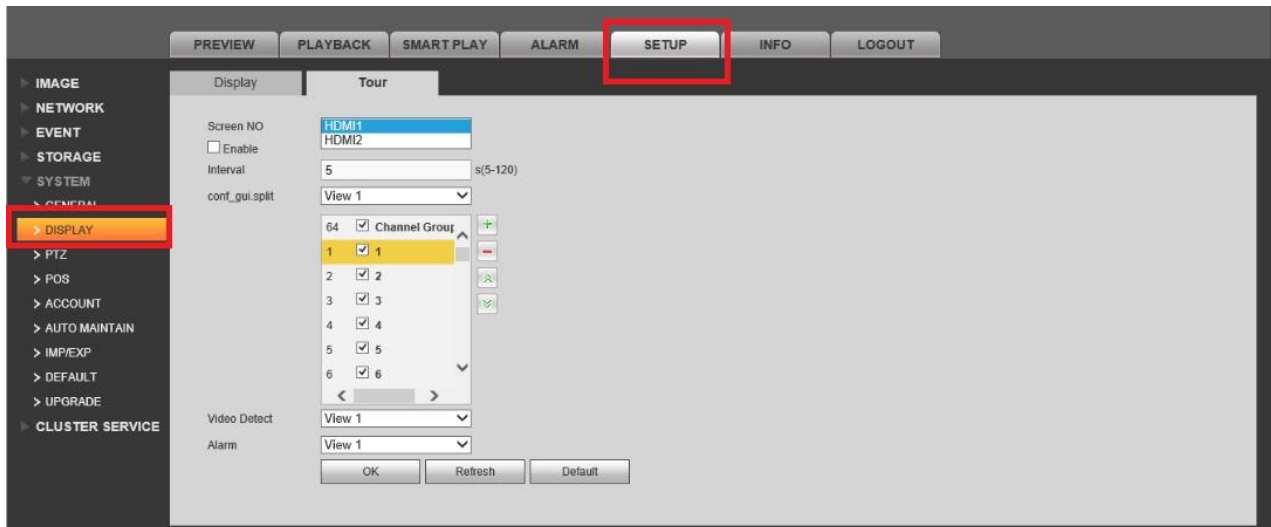


**Step 5.** Select what you would like displayed on the secondary monitor → Select "OK"

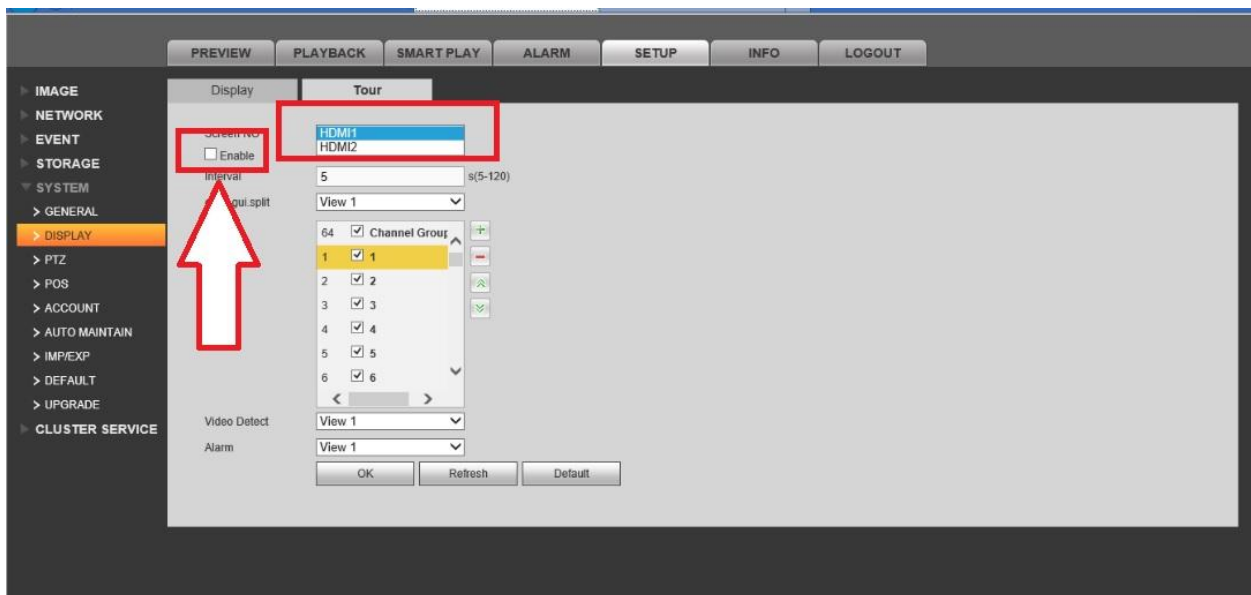


## HDMI Tour Setup

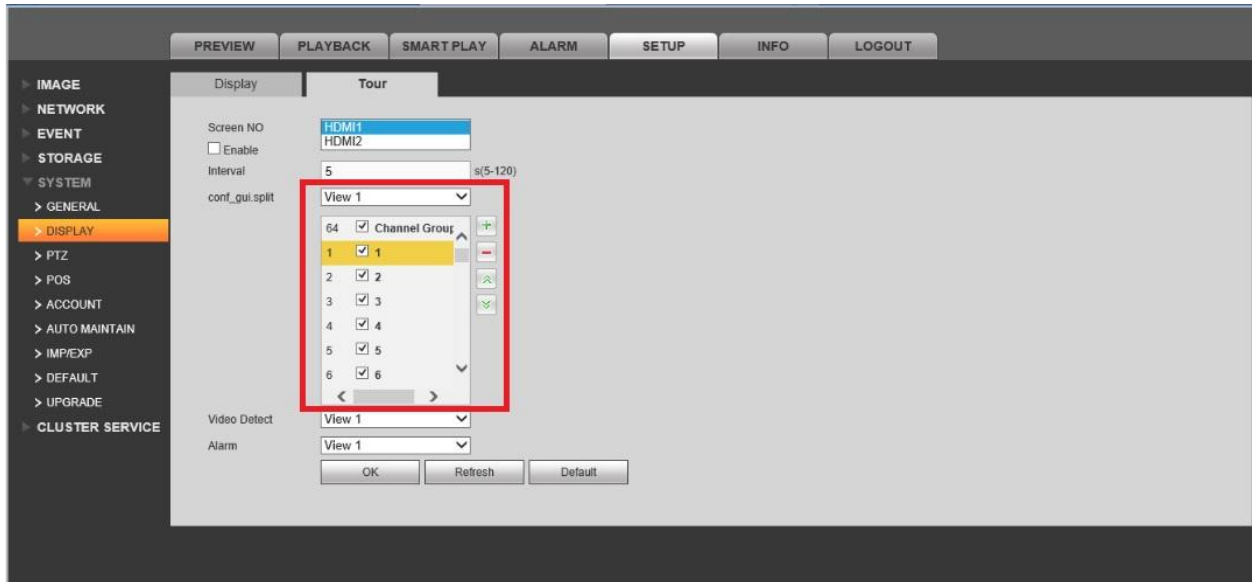
Step 1. Select Set Up → Select Display.



Step 2. Check Enable → Select Screen.



Step 3. Select a View for split view → Select which channels you want in this view.



Step 4. Select a view for video detect → Select a view for alarm → Click "OK" to save.

