

ConfigTool User's Manual (Windows Version)

V4.2.0

Important Safeguards and Warnings

Please read the following safeguards and warnings carefully before using the product in order to avoid damages and losses.

Note:

- Do not expose the device to lampblack, steam or dust. Otherwise it may cause fire or electric shock.
- Do not install the device at position exposed to sunlight or in high temperature. Temperature rise in device may cause fire.
- Do not expose the device to humid environment. Otherwise it may cause fire.
- The device must be installed on solid and flat surface in order to guarantee safety under load and earthquake. Otherwise, it may cause device to fall off or turnover.
- Do not place the device on carpet or quilt.
- Do not block air vent of the device or ventilation around the device. Otherwise, temperature in device will rise and may cause fire.
- Do not place any object on the device.
- Do not disassemble the device without professional instruction.

Warning:

- Please use battery properly to avoid fire, explosion and other dangers.
- Please replace used battery with battery of the same type.
- Do not use power line other than the one specified. Please use it properly. Otherwise, it may cause fire or electric shock.

Special Announcement

- This manual is for reference only.
- All the designs and software here are subject to change without prior written notice.
- All trademarks and registered trademarks are the properties of their respective owners.
- If there is any uncertainty or controversy, please refer to the final explanation of us.
- Please visit our website for more information.

Table of Contents

1	Product Overview.....	- 1 -
2	Installation.....	- 2 -
2.1	Install.....	- 2 -
2.2	Uninstall.....	- 4 -
3	Daily Operation.....	- 5 -
3.1	Login.....	- 5 -
3.2	Add Device.....	- 6 -
3.2.1	Search to Add.....	- 6 -
3.2.2	Manually Add.....	- 9 -
3.3	Modify IP.....	- 10 -
3.3.1	Modify IP.....	- 10 -
3.3.2	Batch Modify IP.....	- 11 -
3.4	Configure Device Parameter.....	- 12 -
3.4.1	Set Encoding Parameter.....	- 12 -
3.4.2	Set Video Parameter.....	- 13 -
3.4.3	Batch Setup.....	- 16 -
3.4.4	Backup and Restore.....	- 21 -
3.5	Configure System Info.....	- 22 -
3.5.1	Time Sync.....	- 23 -
3.5.2	Reboot.....	- 24 -
3.5.3	Default.....	- 25 -
3.5.4	Set Password.....	- 26 -
3.6	Upgrade Device.....	- 27 -
3.6.1	Single Upgrade.....	- 27 -
3.6.2	Batch Upgrade.....	- 29 -
3.7	Package Center.....	- 31 -

1 Product Overview

ConfigTool is a system tool with the following functions:

Real time monitoring preview of IPC, NVR, DVR and other devices, and support setting of video effects.

Set IPC and other device network parameter, encode parameter and etc.

View device SN, version and model.


Upgrade device program.

Batch config device parameters.

2 Installation

You can refer to these steps to install ConfigTool.

2.1 Install

Step 1. Double click . System pops up installation interface as in Figure 2-1.

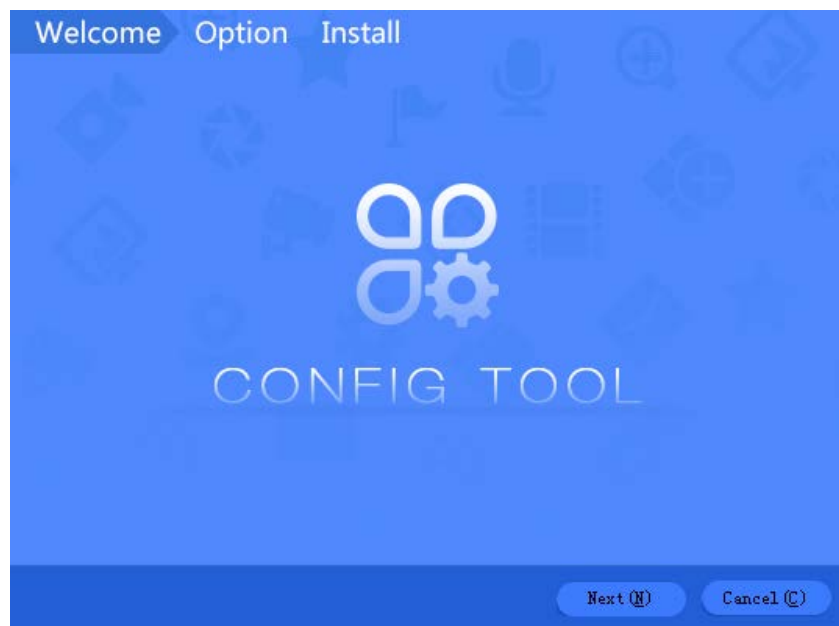


Figure 2-1

Step 2. Click Next. System shows Please select a install directory box as in Figure 2-2.

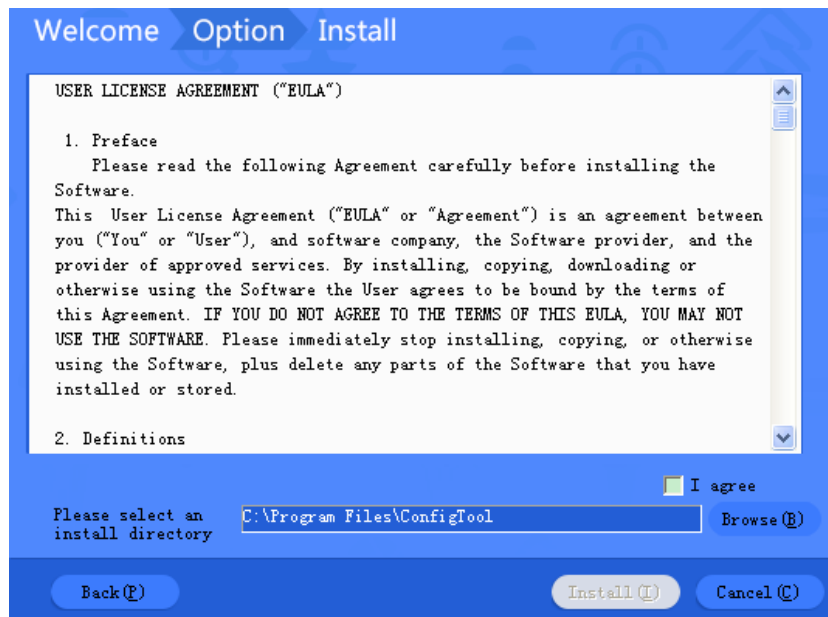


Figure 2-2

Step 3. Check I agree box, and click Browse to choose a directory.

Step 4. Click Install. Install ConfigTool, and after it finishes, the system shows Figure 2-3.

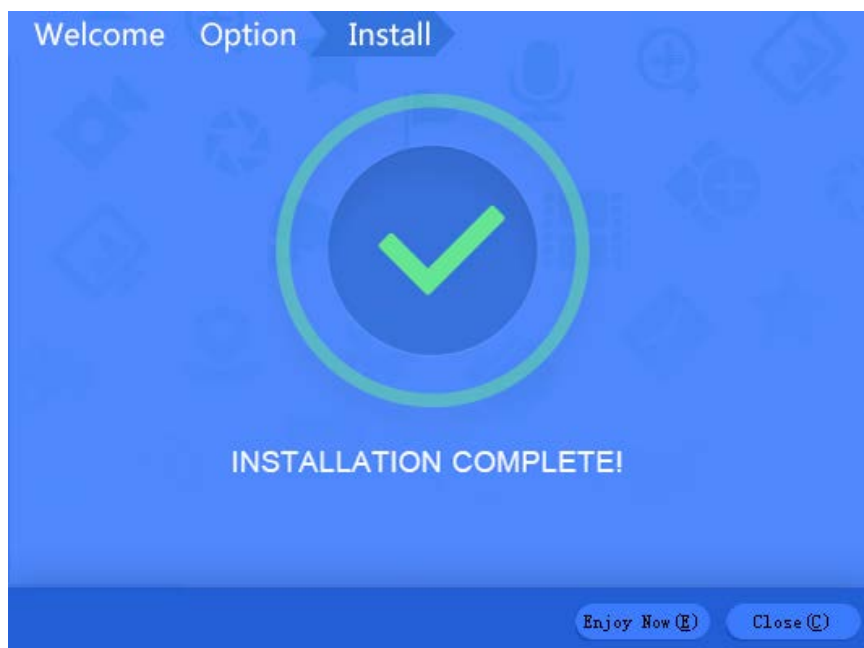


Figure 2-3

Step 5. Click Close.



After installation is complete, double click  on desktop to see Config Tool homepage.

2.2 Uninstall

Step 1. On PC, select Start>All Programs>ConfigTool>Uninstall ConfigTool. See Figure 2-4.



Figure 2-4

Step 2. Click Uninstall, so the system starts to uninstall. When uninstallation is complete, you can see Figure 2-5.

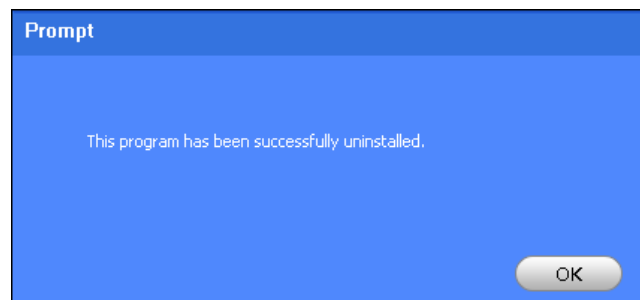



Figure 2-5

Step 3. Click OK. Process completed.

3 Daily Operation

3.1 Login

After installation completes, double click  system pops up the software interface as in Figure 3-1.

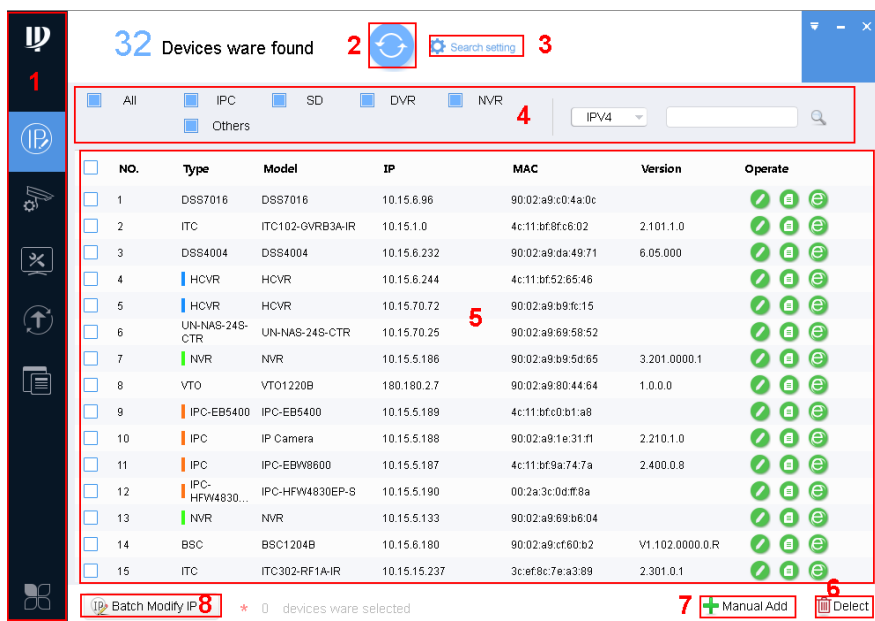







Figure 3-1

No.	Function	Description
1	Menu	<p>It includes the following six tabs:</p> <ul style="list-style-type: none">  : one by one or batch modify device IP.  : modify encode config and video config.  : set system time, auto reboot or manually reboot, and restore default settings.  : upgrade device one by one or as batch.  : manage template and apply template. Template information





		include encode config info and video config info. Management template allows to maintain template config info. Apply template is to modify device data by importing template.  : You can embed more applications here.
2	Search Setting	Search for device by IP.
3	Refresh	Search device again.
4	Filter	<ul style="list-style-type: none"> Under filter tab, you can quickly filter device by set type, as well as customize filter for search. Under All tab, it shows all search results.
5	Device List	It shows searched device and device info, including type, model, IP, MAC and version. In Operation list, click  to view device details. Click  to quickly open device WEB config interface. Click  to modify device IP.
6	Delete	Delete device you do not need in device list.
7	Manual Add	Manually add known IP of device.
8	Batch Modify IP	Modify more than one device IP at the same time.

Chart 3-1

3.2 Add Device

Auto or manually search by IP, and show result in the device list. You can upgrade, set the searched device.

Warning:

Please make sure the network is well connected between device and PC where ConfigTool is installed, otherwise device will not be searched by ConfigTool.


3.2.1 Search to Add

3.2.1.1 Auto Search

After you have entered ConfigTool homepage, ConfigTool will auto search and show searched device in device list, see Figure 3-2.

Note:

- If it is your first time using ConfigTool, you shall be aware that device search is performed within the segment same with PC by default.

- Click , search device again, and update device list info.
- Under Filter tab, you can filter device, and quickly search for device in the results. Under All tab, you will see all searched devices.
- For use after the first time, search is performed within segment used last time. Please refer to Ch 3.2.1.2.

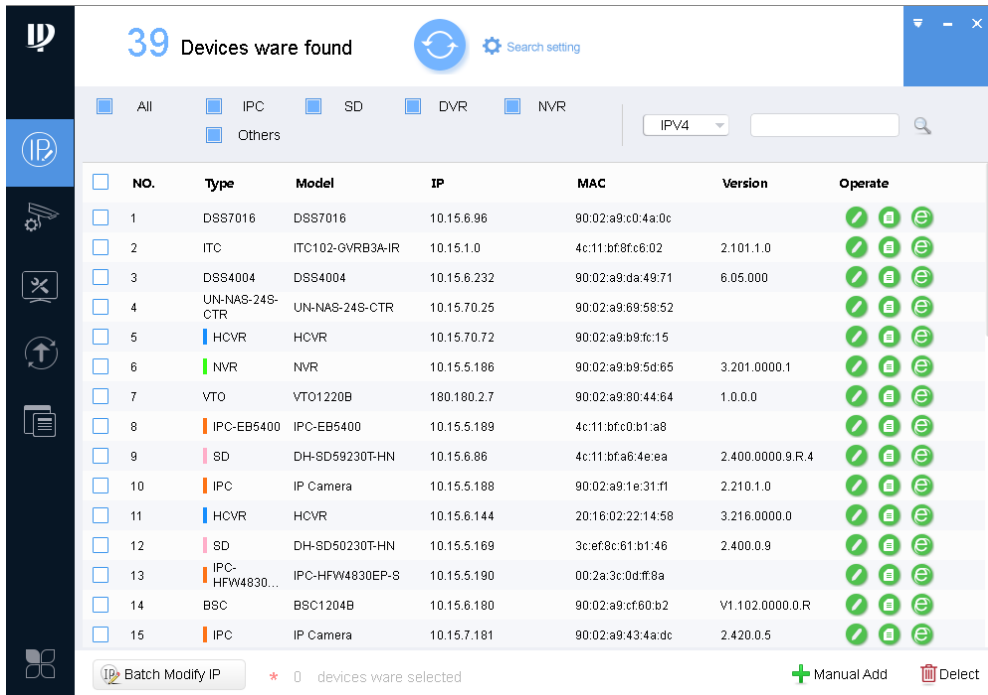


Figure 3-2

3.2.1.2 Manually Search

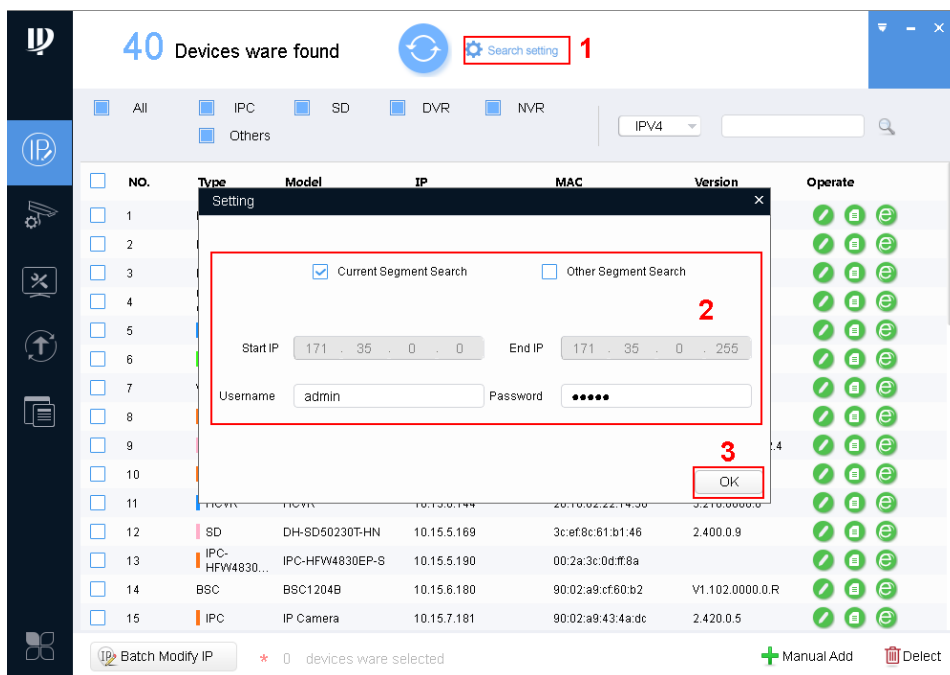


Figure 3-3

Step 1. In ConfigTool homepage, click  Search setting . System pops up Setting box.


Step 2. Set criteria of search, see Chart 3-2.

Parameter	Explanation	Note
Current Segment Search	Current segment, which is IP segment after of PC where ConfigTool is installed. Check current segment search, then it will only search device in current segment. For first time use, auto search uses default criteria.	If when you set criteria and check current segment search AND other segment search, then it will search device in both segments.
Other Segment Search	Check other segment search, set start IP and end IP, so it searches only device in this set segment.	
Start IP		
End IP		
Username	When you modify IP, configure device parameter, configure system parameter and upgrade device, searched username and password at login.	-
Password		

Chart 3-2

Step 3. Click OK. In device list, it shows searched device.

Note:

- Click , search device again, and update device list info.
- Under Filter tab, you can filter device, and quickly search for device in the results. Under All tab, you will see all searched devices.
- When you close this software, it will save search criteria, so you see these saves criteria when you open ConfigTool for the next time.

3.2.2 Manually Add

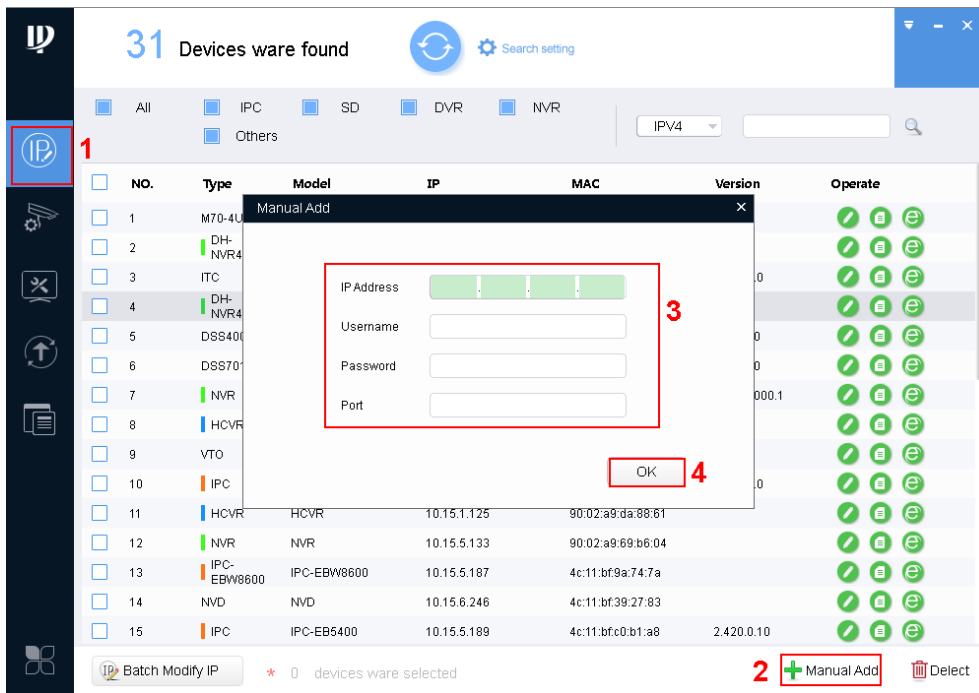



Figure 3-4

Step 1. Click .

Step 2. Click  . System shows manually add interface.

Step 3. Set parameter, refer to Chart 3-3.

Parameter	Note
IP Address	Add device IP address.

Username	Username and password to login.
Password	
Port	Add device port no.

Chart 3-3

Step 4. Click OK. Added device is shown in device list.

Note:

You can set search filter, which allow you to quickly filter out device you want.

3.3 Modify IP

You can modify a single IP or batch modify IP.

3.3.1 Modify IP

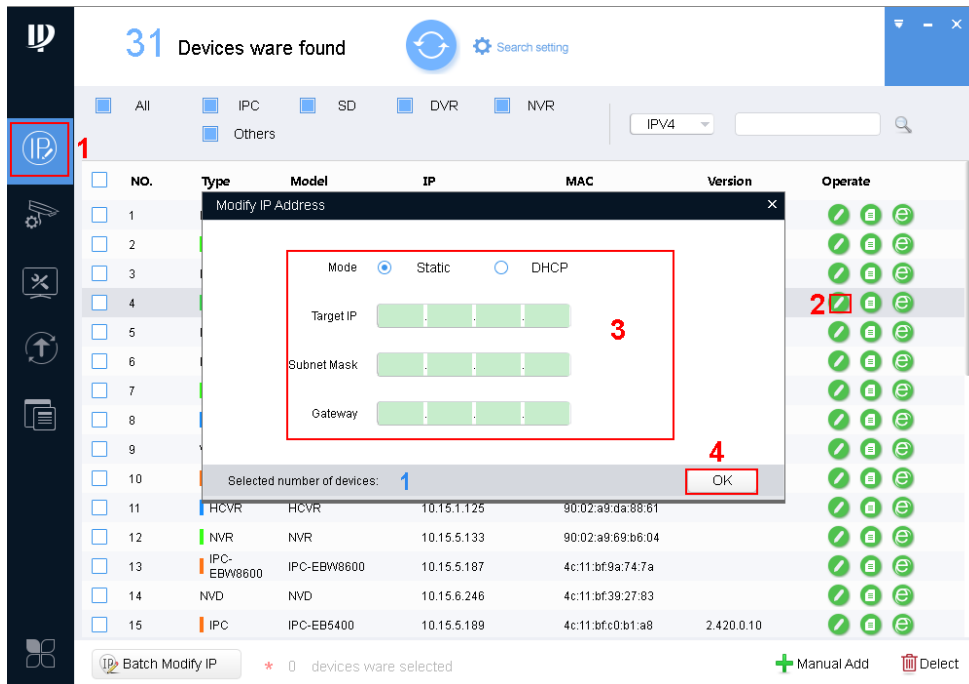



Figure 3-5

Step 1. Click .

System shows Modify IP Address interface.

Step 2. Click  of device you want to modify its IP.

Note:

If the device you want to modify its IP is not shown in device list, please search device again. Please refer to Ch 3.2.

Step 3. Set mode, target IP, subnet mask and gateway.

Step 4. Click OK.

3.3.2 Batch Modify IP

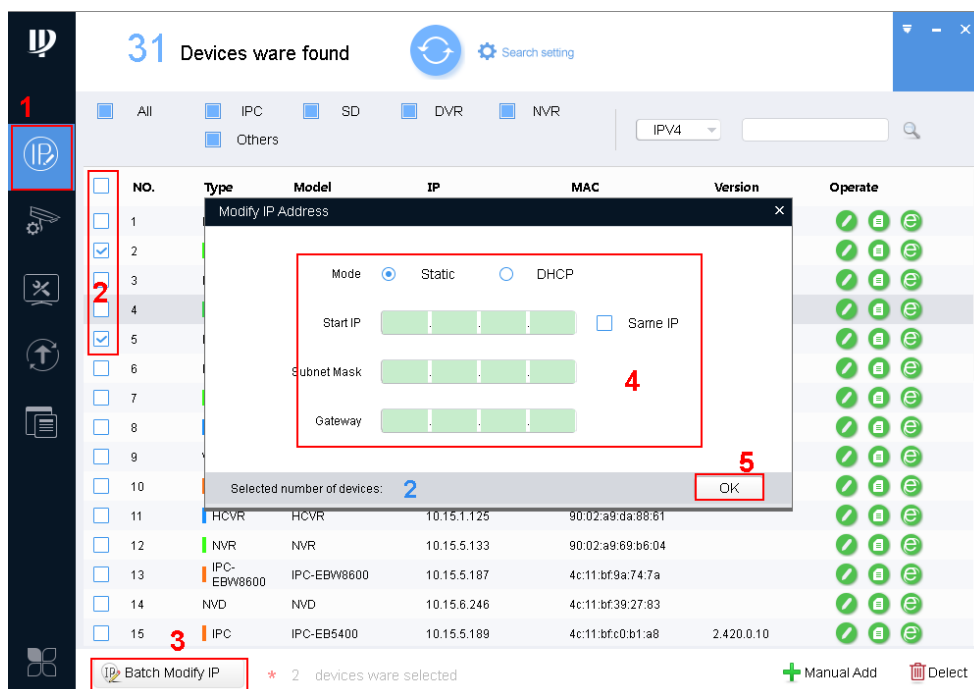


Figure 3-6

Step 1. Click  to enter batch modify IP interface.

Step 2. Select device you want to modify IP.

Note:

If the device you want to modify its IP is not shown in device list, please search device again. Please refer to Ch 3.2.

Step 3. Click  , system pops up Modify IP box.

Step 4. Set start IP, subnet mask and gateway.

Note:

Check Same IP will set the same IP for all devices involved.

Step 5. Click OK.

3.4 Configure Device Parameter

Configure device parameter, including encoding parameter and video parameter.

3.4.1 Set Encoding Parameter

ConfigTool supports setup of device bit stream type, encode mode, resolution and etc.

Step 1. Click , system shows device config interface, see Figure 3-7.

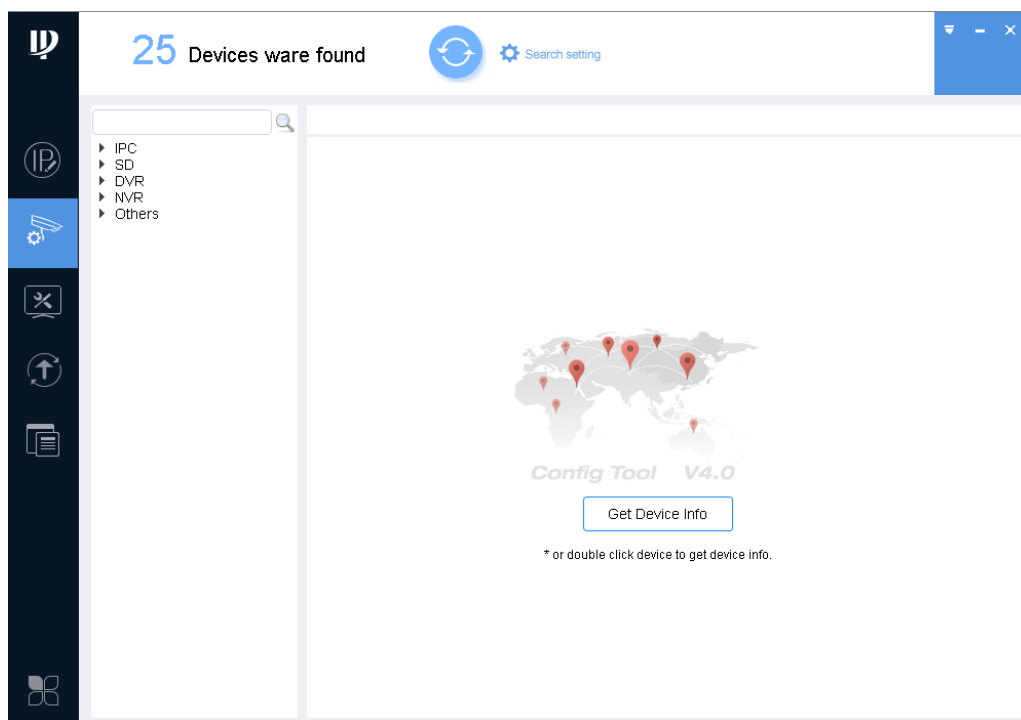


Figure 3-7

Step 2. Select device to configure encode parameter, click Get device info, and system shows Encode interface, see Figure 3-8.

Note:

- Double click device you want to configure encode parameter, and you also can enter Encode interface.
- Please change password after login for the first time.
- If the device you want to modify its IP is not shown in device list, please search device again. Please refer to Ch 3.2.

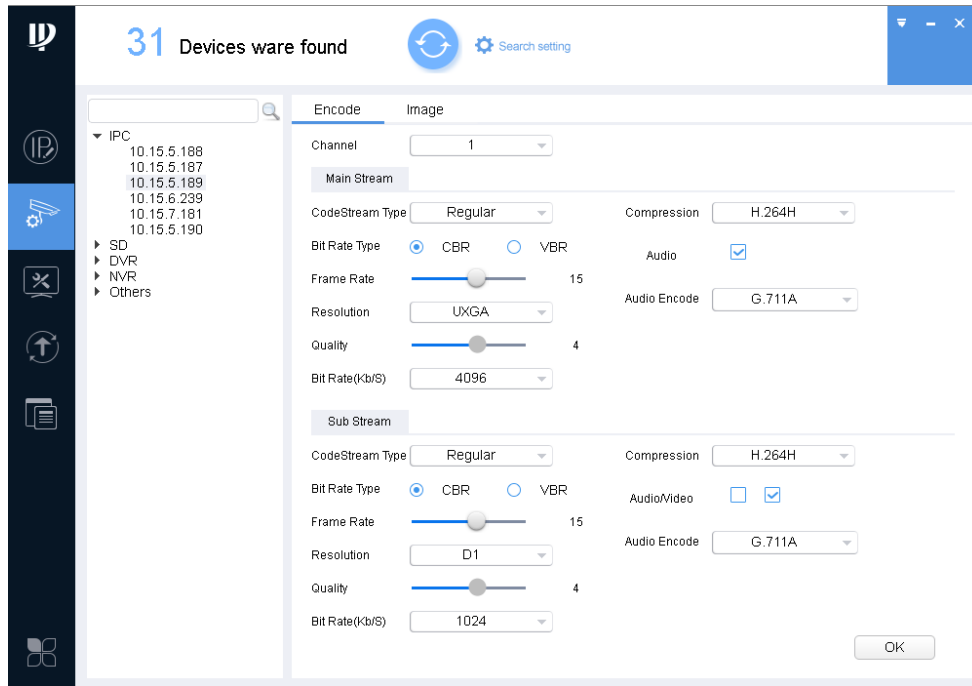


Figure 3-8

Step 3. Set encode parameter, see Chart 3-4.


Parameter	Note
Channel	Select corresponding channel.
Code Stream Type	Device main stream or sub stream type.
Compression	Video compression format, you can configure: MJPG, H.264B, H.264H, H.264. <ul style="list-style-type: none"> ● H.264:Main Profile encoding ● H.264H: High Profile encoding ● H.264B: Baseline Profile encoding ● MJPEG: under this encoding mode, video image required high bit rate to ensure video quality, so the max bit rate in reference is recommended.
Bit Rate Type	Include CBR, VBR. You can set quality under VBR only.
Frame Rate	Frame rate of current channel. PAL: 1 fps~25fps. NTSC: 1fps~30 fps.
Resolution	Include multiple resolutions; each type corresponds to different bit rate.
Quality	Quality of video in current channel.
Bit Rate	<ul style="list-style-type: none"> ● Under CBR, this value is the max. Under dynamic video, video frame rate and quality may be lowered to ensure not exceeding this value. ● Under VBR, this value is meaningless.

Chart 3-4

Step 4. Click OK.

3.4.2 Set Video Parameter

ConfigTool supports to view device live preview image and set video effect.

Step 1. Click , system shows device config interface.

Step 2. Select device to configure video parameter, click Get device info.

Note:

- Double click device you want to configure , and then enter Encode interface.
- If the device you want to modify its IP is not shown in device list, please search device again. Please refer to Ch 3.2.

Step 3. Click Image tab, system shows Image interface, see Figure 3-9.

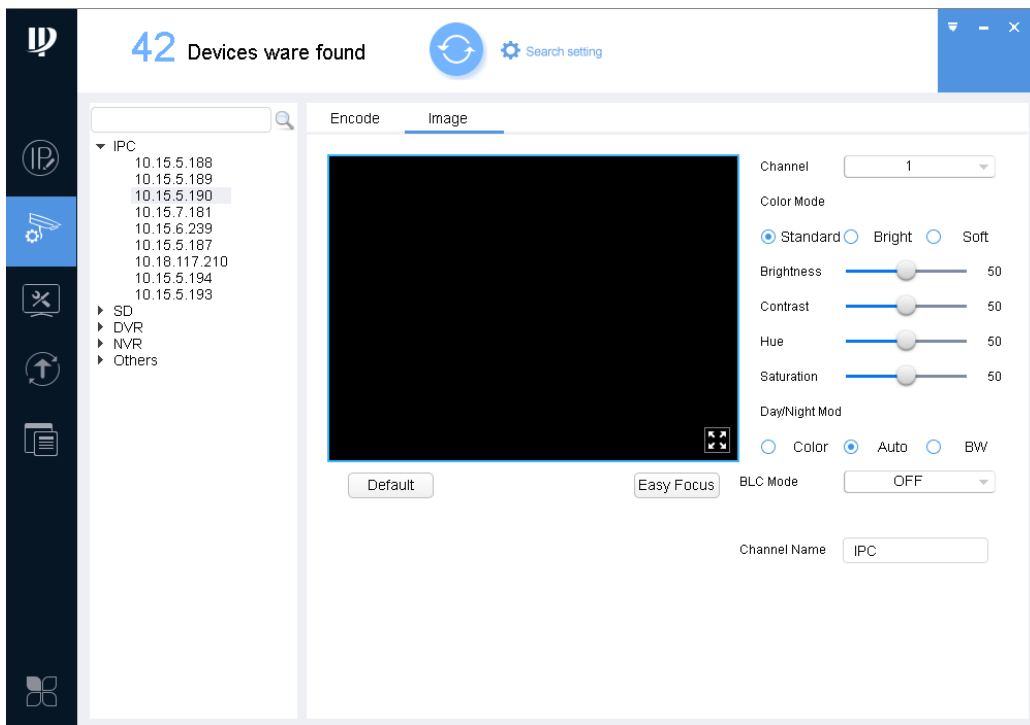





Figure 3-9

Step 4. Set channel and color, meantime you wan view preview. See Chart 3-5.

Parameter	Note
	<ul style="list-style-type: none"> ● When window is in normal size, click  in the video window to display in full screen. ● When video is in full screen, click  to return to normal size.
Channel	Select channel to be monitored.
Color Mode	Preset three modes (standard, bright, soft)
Brightness	Used to adjust overall brightness. When image is bright or dark, you can adjust this value. The overall brightness of image will change. The higher the value, the mode bright the image will be.

	Range: 0~100. Recommended value is 40~60. Default is 50.
Contrast	Used to adjust overall contrast. When image contrast is not OK, you can adjust this value. The overall contrast of image will change. The higher the value, the difference between bright and dark part is more obvious. Range: 0~100. Recommended value is 40~60. Default is 50.
HUE	Adjust HUE of image.
Saturation	Adjust image saturation.
BLC Mode	<ul style="list-style-type: none"> ● Off: Close BLC mode. ● BLC: Increase brightness of main body in dark image. ● WDR: When light comparison of image is strong, it adjusts strong and weak lights in image, increasing dynamic range of imaging model. ● HLC: Reduce strong light, and balance light.
Day/Night Mode	Set video into color, black/white, or auto mode.
Easy Focus	Assist to adjust focus.
Default	It restores default value of brightness, contrast, hue and saturation.
Zoom In	Zoom in image with your mouse wheel.
Original Image	After image is zoomed in, right click mouse to go to original image display.

Chart 3-5

Step 5. Set Easy Focus.

- 1) Click Easy Focus. See Figure 3-10.

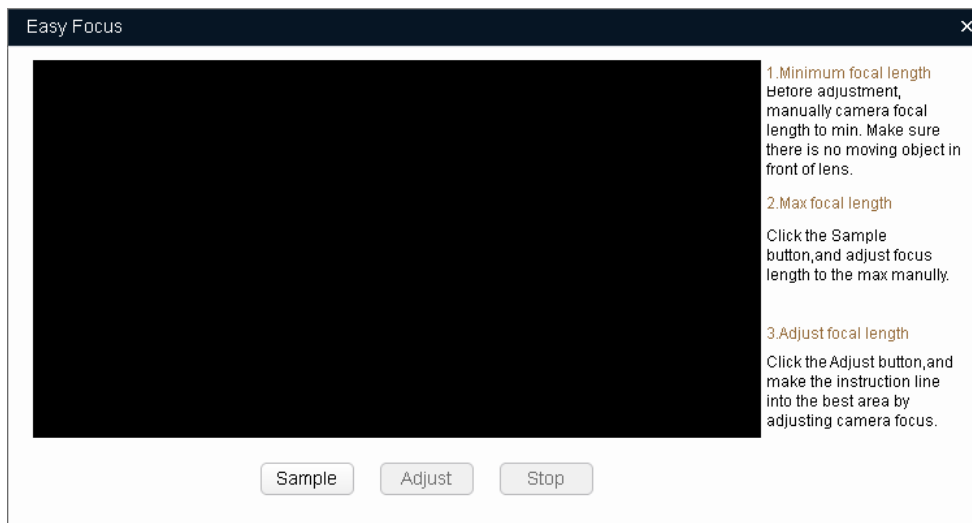


Figure 3-10

2) Follow guide on the right and start to sample, see Figure 3-11.



Figure 3-11

Adjust until image is clear as in Figure 3-12.



Figure 3-12

Note:


Red line is the definition value of current image. Green line is the definition value when focus changes from min to max.

3.4.3 Batch Setup

Via import or direct application template, batch set device encoding parameters and video parameters.

3.4.3.1 Direct Application

Apply default template to device under the same type.

Step 1. Click . System shows Template setup interface. See Figure 3-13.

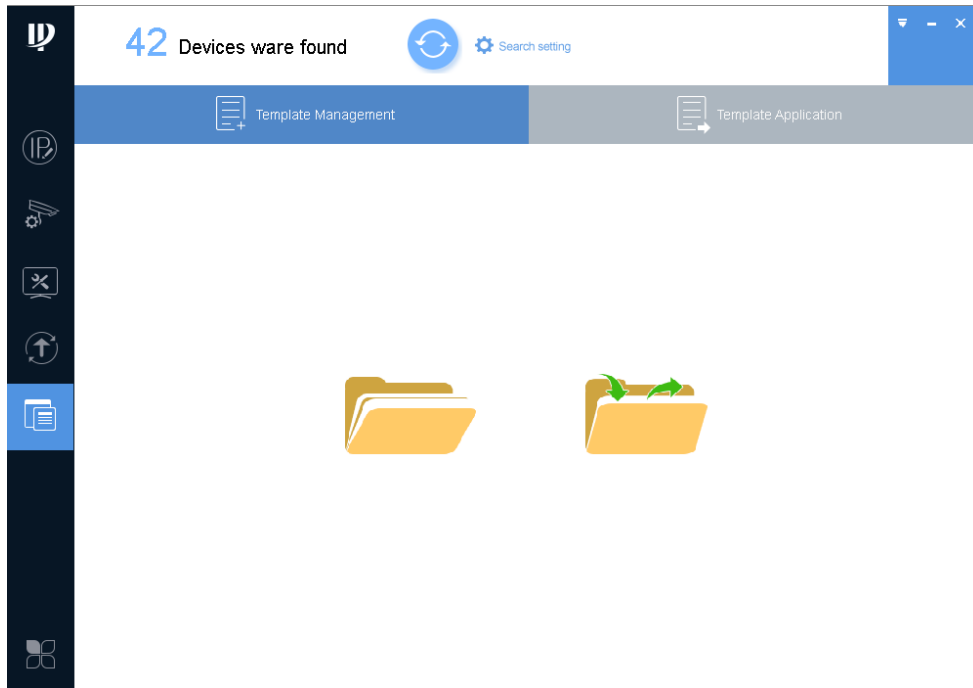


Figure 3-13

Step 2. Click . System shows Template Management interface, see Figure 3-14.

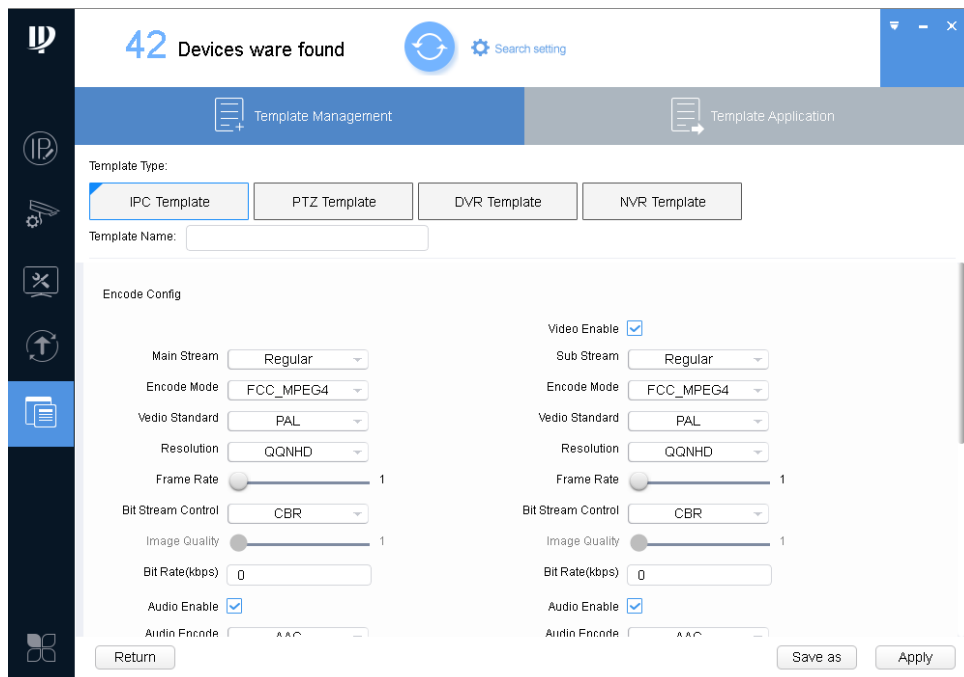


Figure 3-14

Step 3. Select template type, enter template name, confirm parameter, click Apply. System shows Template Application interface, see Figure 3-15.

Note:

Click "Save as" to save the template to local.

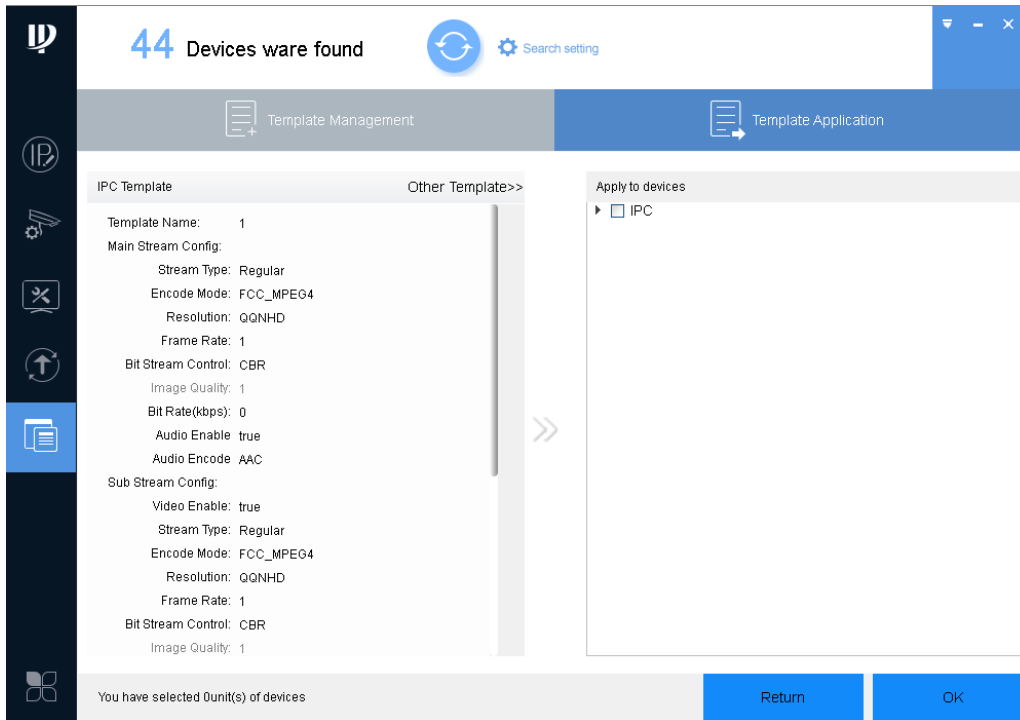


Figure 3-15

Step 4. Select device you want to set, click OK.

System prompts it is configuring template, and show progress of configuration. After config, system shows feedback.

Note:

If the device you want to modify its IP is not shown in device list, please search device again. Please refer to Ch 3.2.

3.4.3.2 Import Setup

By importing template, you can batch modify device encoding parameter and video parameter.

Step 1. Click , system shows config interface, see Figure 3-16.

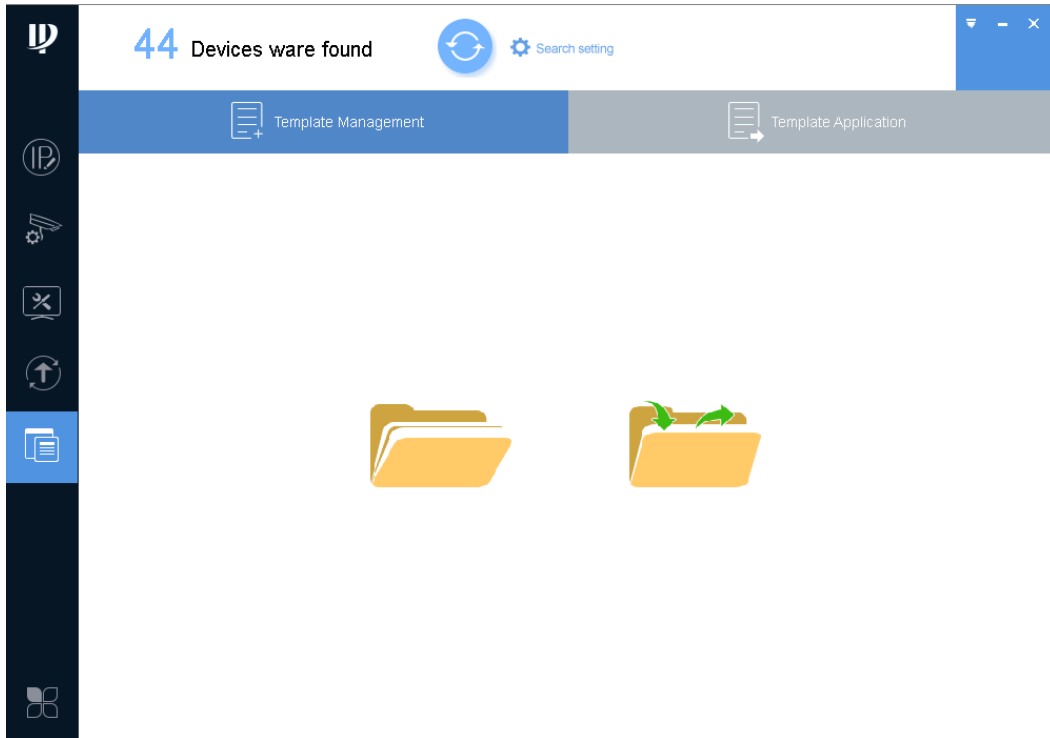


Figure 3-16

Step 2. Click  .

System shows Load Template interface, see Figure 3-17.

Note:

Before loading template, please make sure at least one template file exists. If you need to create template, please refer to Ch 3.4.4.1.

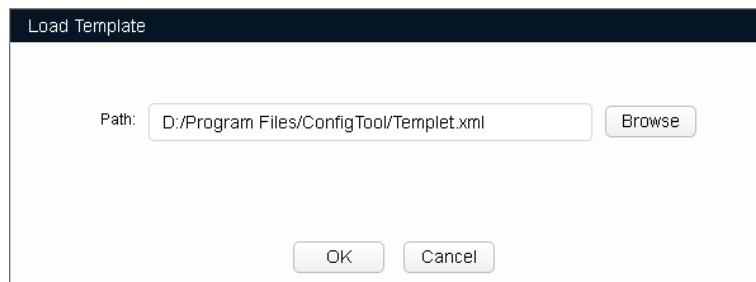


Figure 3-17

Step 3. Click Browse, select template, and click OK.

System shows Template Management interface, see Figure 3-18.

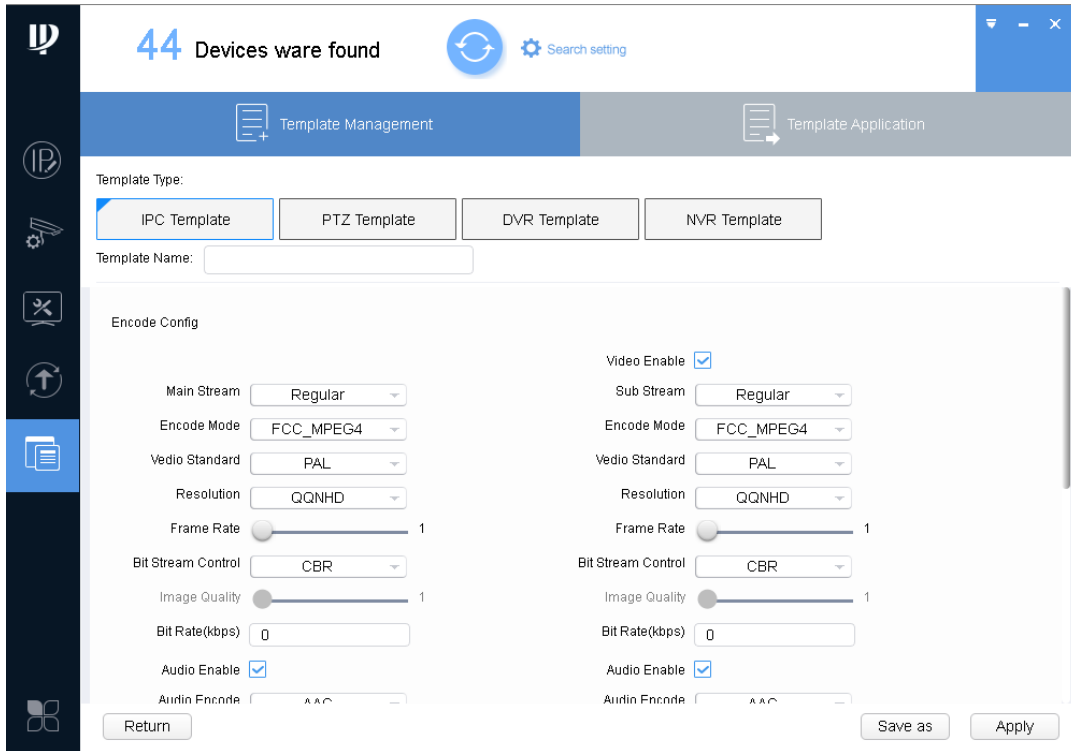


Figure 3-18

Step 4. Click Apply, and system shows device selection interface, see Figure 3-19.

Note:

Click "Save as" to save template to local.

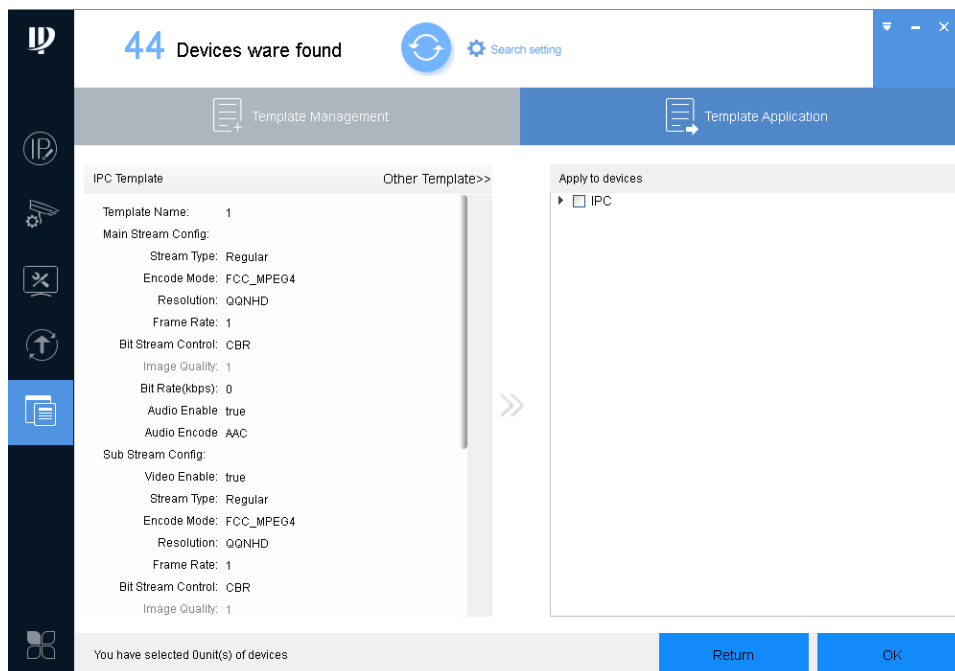


Figure 3-19

Step 5. Select encoding parameter and video parameter to be modified, click OK.

The system is configuring template, and shows config progress. When it is finished, system provides feedback.


Note:

If the device you want to modify its IP is not shown in device list, please search device again. Please refer to Ch 3.2.

3.4.4 Backup and Restore

Back up encoding and video config information, so when config is damaged, it can restore default settings.

3.4.4.1 Backup

Step 1. Click . System shows template config interface, see Figure 3-20.

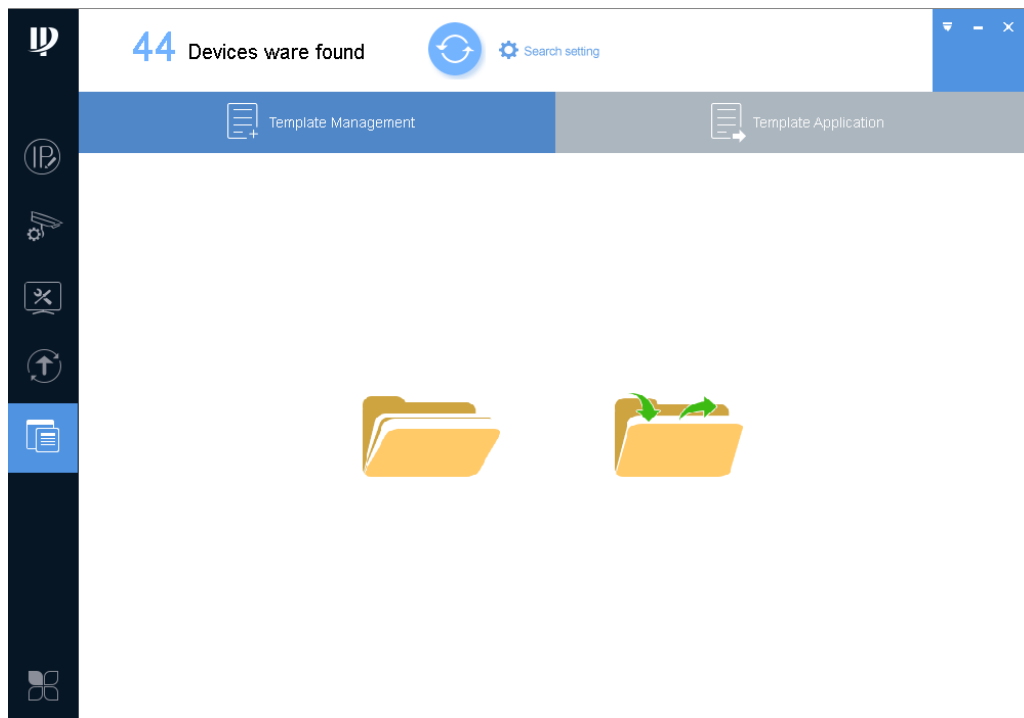


Figure 3-20

Step 2. Click . System shows Template Management interface, see Figure 3-21.

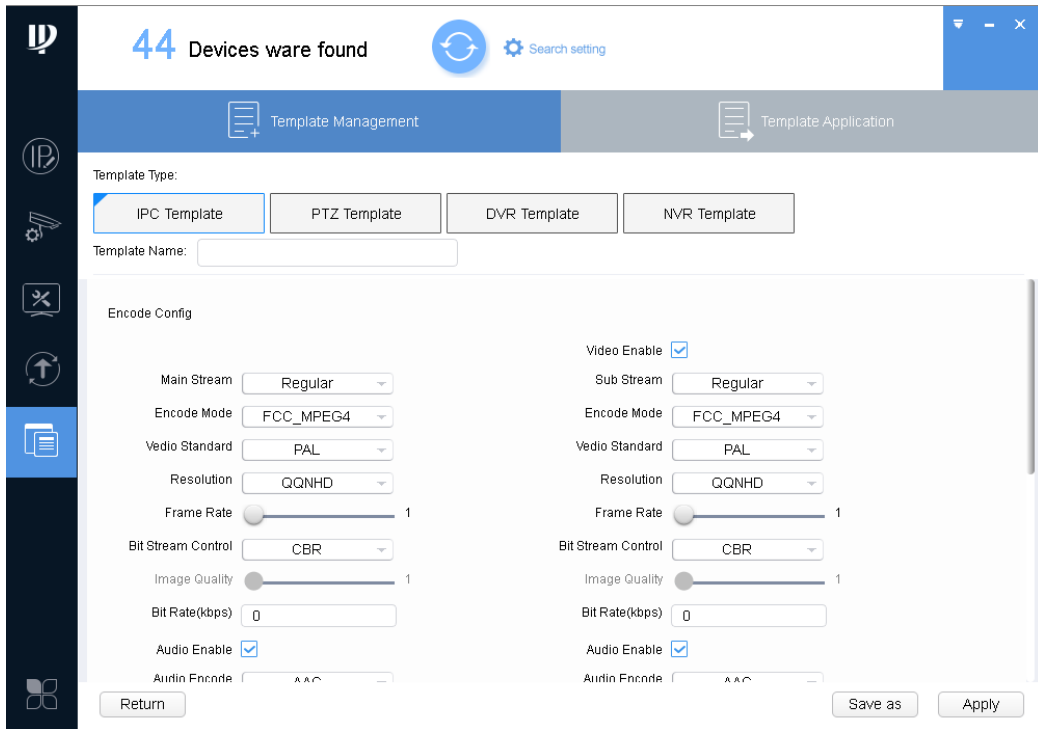


Figure 3-21

Step 3. Select template type, enter template name, set parameters and click “Save as”. See Figure 3-22.

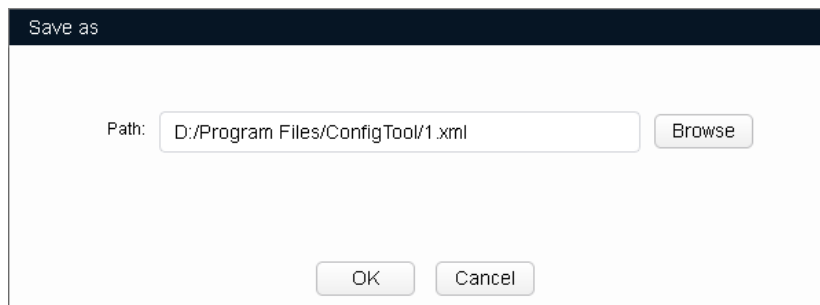


Figure 3-22

Step 4. Click Browse, select storage path and click OK.

3.4.4.2 Restore

Restore device encoding parameter and video parameter config, please refer to Ch 3.4.3.2.

3.5 Configure System Info

Configure system information, including time sync, auto or manually reboot device and restore default settings.

3.5.1 Time Sync

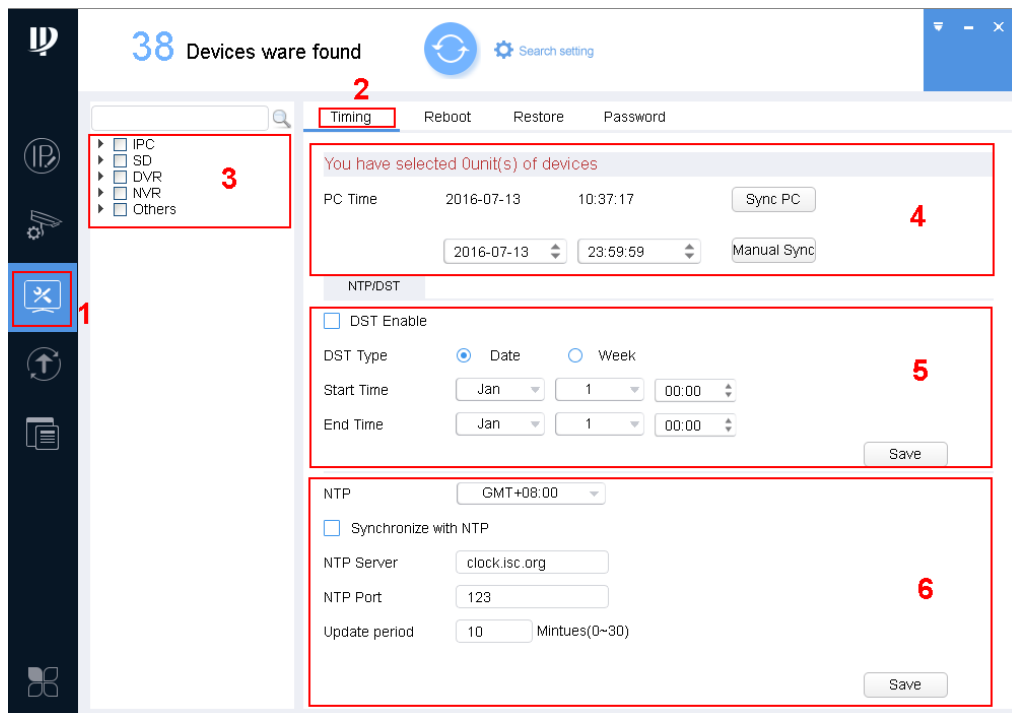



Figure 3-23

Step 1. Click , system shows system config interface.

Step 2. Click Timing tab.

Step 3. Select device.

Note:

- A device can be selected more than once, if you select more than one device, the batch device will set auto reboot at the same time.
- If the device you want to modify its IP is not shown in device list, please search device again. Please refer to Ch 3.2.

Step 4. Set time.

You can use either of the following method to modify time.

- Enter time, click manually sync.
- Click Sync PC, to sync time with PC.
- Sync with NTP server, please refer to Chart 3-6.

Parameter	Note
Sync with NTP	Enable switch.
NTP Server	Set NTP server and port.

NTP Port	
Update Period	Interval of update.
Save	Save set NTP server info.

Chart 3-6

3.5.2 Reboot

3.5.2.1 Auto Reboot

Auto reboot is to reboot device within set time.

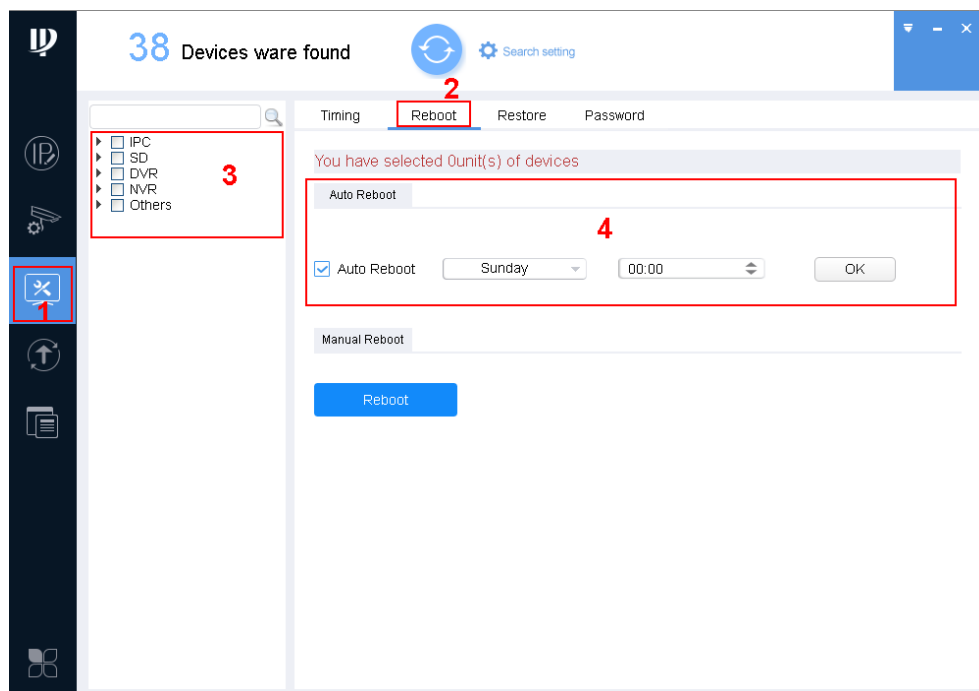



Figure 3-24

Step 1. Click , system shows system config interface.

Step 2. Click Reboot tab, system shows reboot interface.

Step 3. Select device.

Note:

- A device can be selected more than once, if you select more than one device, the batch device will set auto reboot at the same time.
- If the device you want to modify its IP is not shown in device list, please search device again. Please refer to Ch 3.2.

Step 4. Check auto reboot, set date and time, click OK.

Note:

Reboot will cause operation interruptions, so please reboot device when operation is not frequent.

3.5.2.2 Manually Reboot

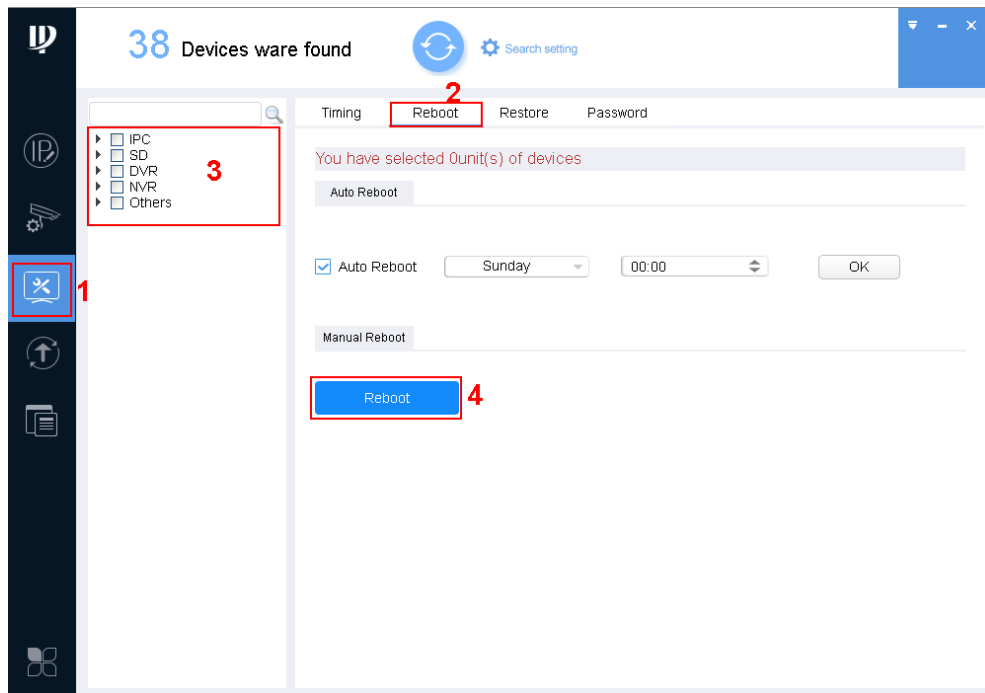



Figure 3-25

Step 1. Click , system shows system config interface.

Step 2. Click Reboot tab, system shows reboot interface.

Step 3. Select device.

Note:

- A device can be selected more than once, if you select more than one device, the batch device will set auto reboot at the same time.
- If the device you want to modify its IP is not shown in device list, please search device again. Please refer to Ch 3.2.

Step 4. Click Reboot.

Note:

Reboot will cause operation interruptions, so please reboot device when operation is not frequent.

3.5.3 Default

Default function is to restore device general setup, encode setup, record setup, serial setup, alarm setup, video detection and video control.

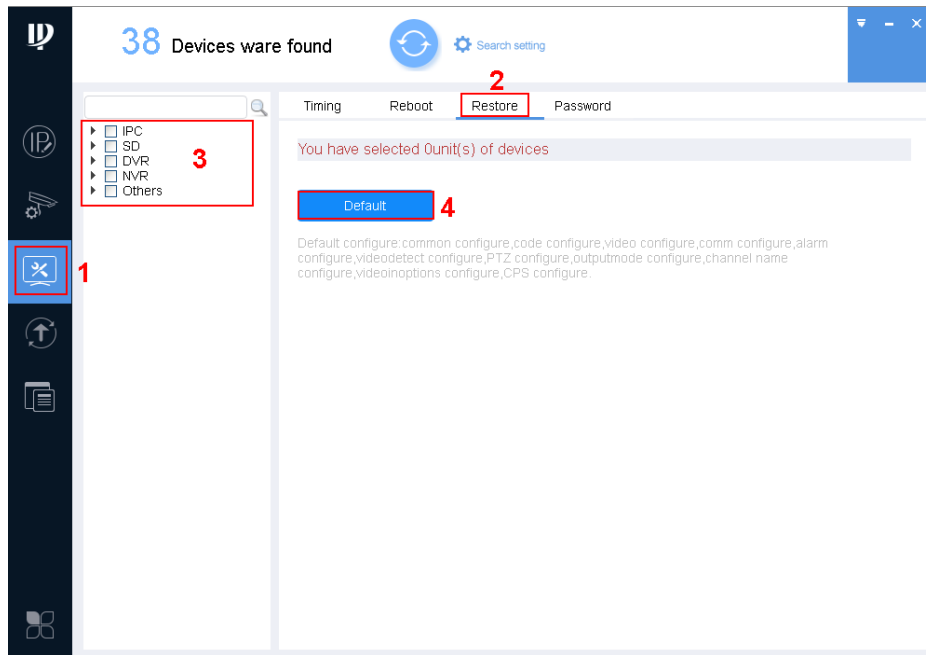



Figure 3-26

Step 1. Click , system shows system config interface.

Step 2. Click Restore tab, system shows Restore interface.

Step 3. Select device.

Note:

- A device can be selected more than once, if you select more than one device, the batch device will set auto reboot at the same time.
- If the device you want to modify its IP is not shown in device list, please search device again. Please refer to Ch 3.2.

Step 4. Click Default.

3.5.4 Set Password

Modify device login password.

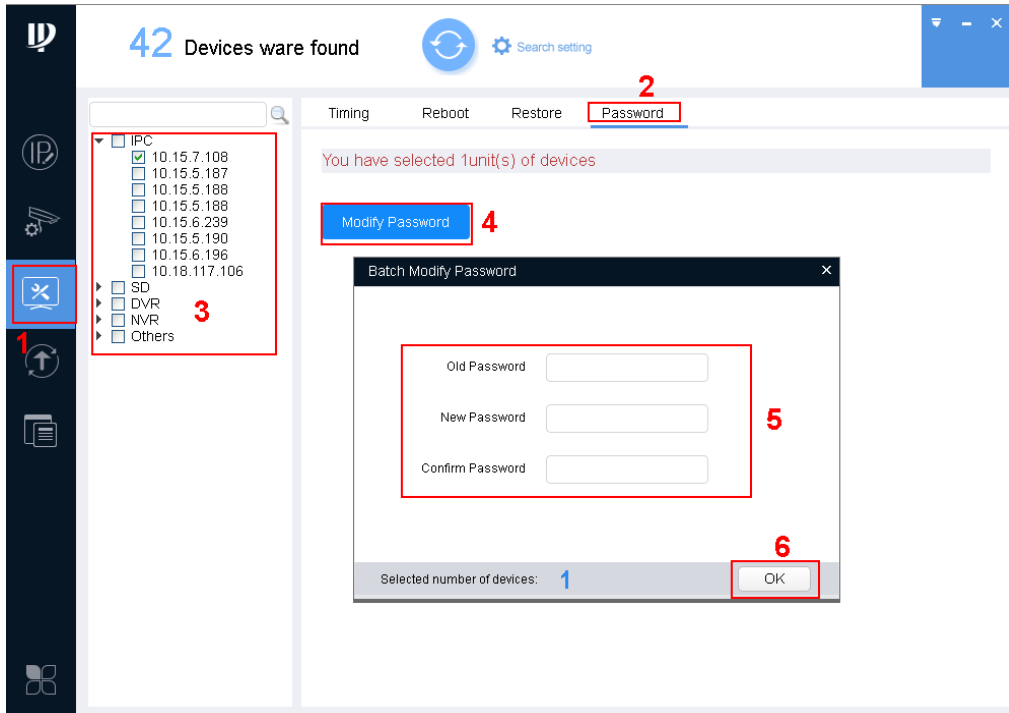



Figure 3-27

Step 1. Click . System shows system config interface.

Step 2. Click Password tab. System shows Password interface.

Step 3. Select device.

Note:

- A device can be selected more than once, if you select more than one device, the batch device will set auto reboot at the same time.
- If the device you want to modify its IP is not shown in device list, please search device again. Please refer to Ch 3.2.

Step 4. Click Modify Password.


Step 5. Enter old password, new password and confirm password.

Step 6. Click OK.

3.6 Upgrade Device

ConfigTool supports to upgrade one device and upgrade multiple devices.

3.6.1 Single Upgrade

Step 1. Click , system shows upgrade interface, see Figure 3-28.

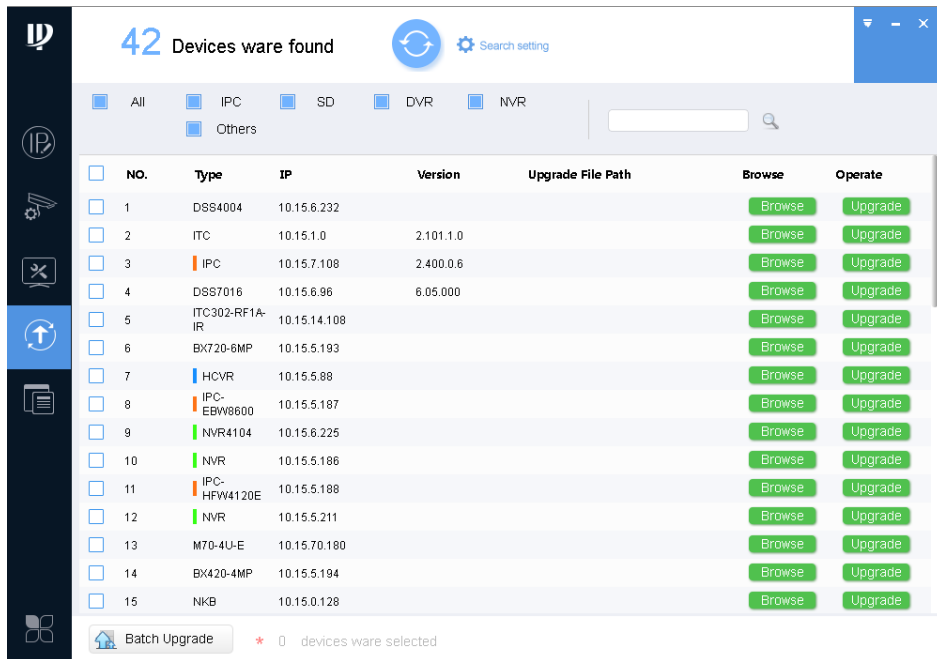


Figure 3-28

Step 2. Click a device you want to upgrade, select upgrade file, see Figure 3-29.

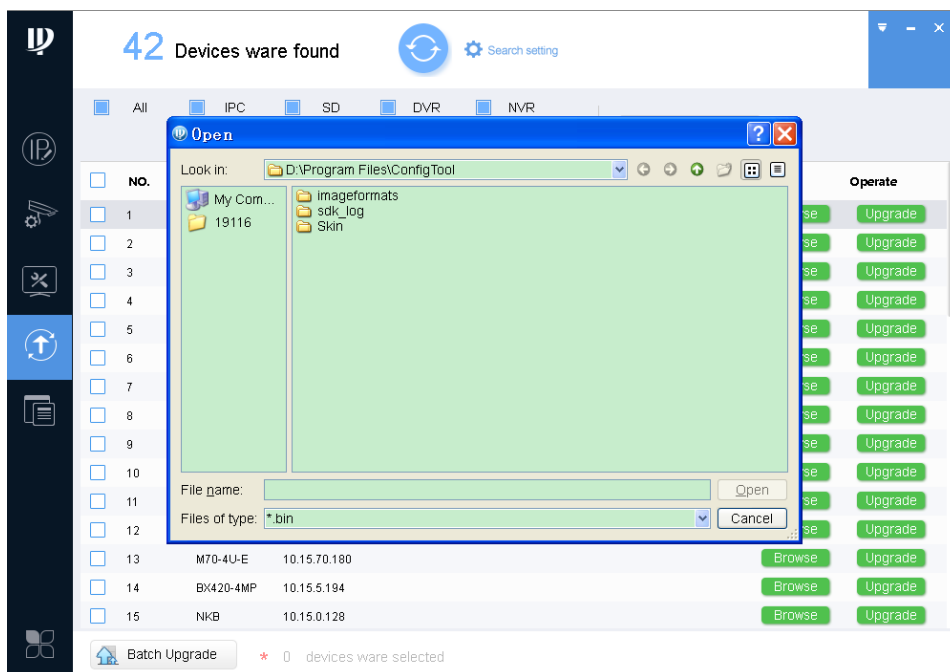


Figure 3-29

1. Click Browse of corresponding device you want to upgrade.

Note:

If the device you want to modify its IP is not shown in device list, please search device again. Please refer to Ch 3.2.

2. Select upgrade file.
3. Click Open.


Step 3. After you click Upgrade, system will start to upgrade. When upgrading is complete, device will

auto reboot

Note:

If device goes offline during upgrading process, then ConfigTool will stop at upgrading interface and once device is online again, upgrading will continue.

3.6.2 Batch Upgrade

Step 1. Click , system shows upgrade interface, see Figure 3-30.

Step 2. Check devices you want to upgrade

Note:

- All devices you select must be upgraded to the same version of software.
- If the device you want to modify its IP is not shown in device list, please search device again. Please refer to Ch 3.2.

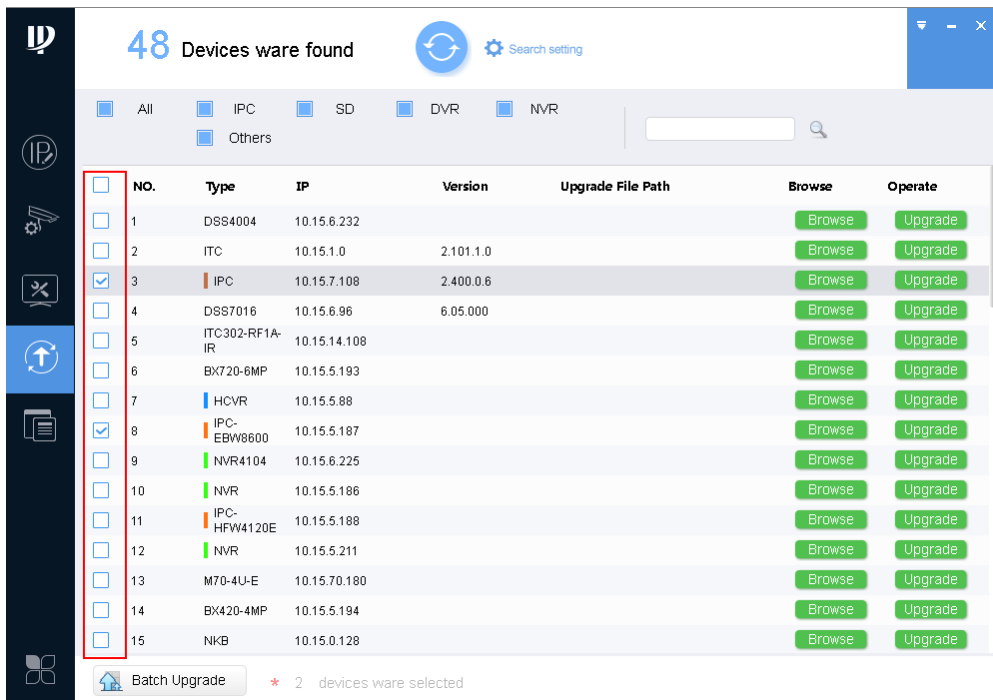


Figure 3-30

Step 3. Click Batch Upgrade, system shows Batch Upgrade box, see Figure 3-31.

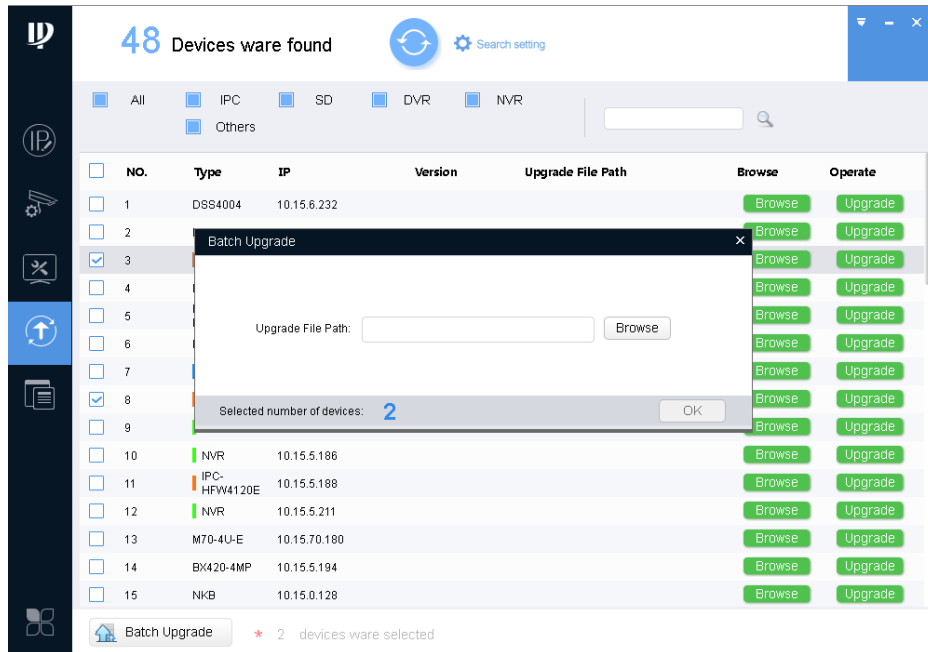


Figure 3-31

Step 4. Click Browse, select file, see Figure 3-32.

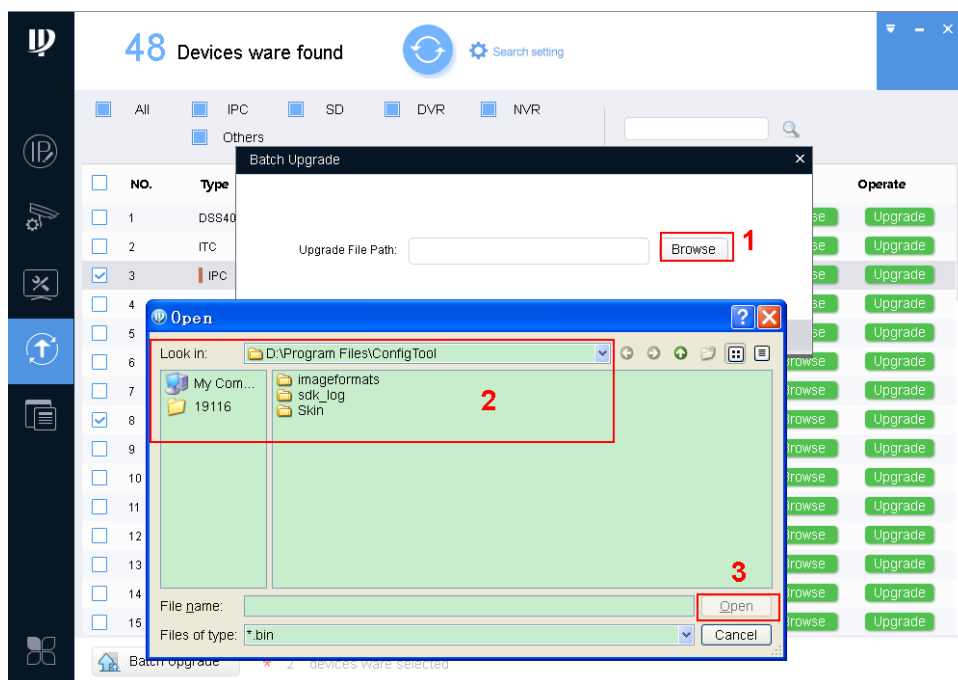


Figure 3-32

1. Click Browse of corresponding device you want to upgrade.
2. Select upgrade file.
3. Click Open.

Step 5. Click OK, system starts to upgrade.

Note:

If devices go offline during upgrading process, then ConfigTool will stop at upgrading interface

and once device is online again, upgrading will continue.

3.7 Package Center

After you receive special tool (such as VDPConfigTool) package, you can embed it into ConfigTool.

Step 1. Click . See Figure 3-33.

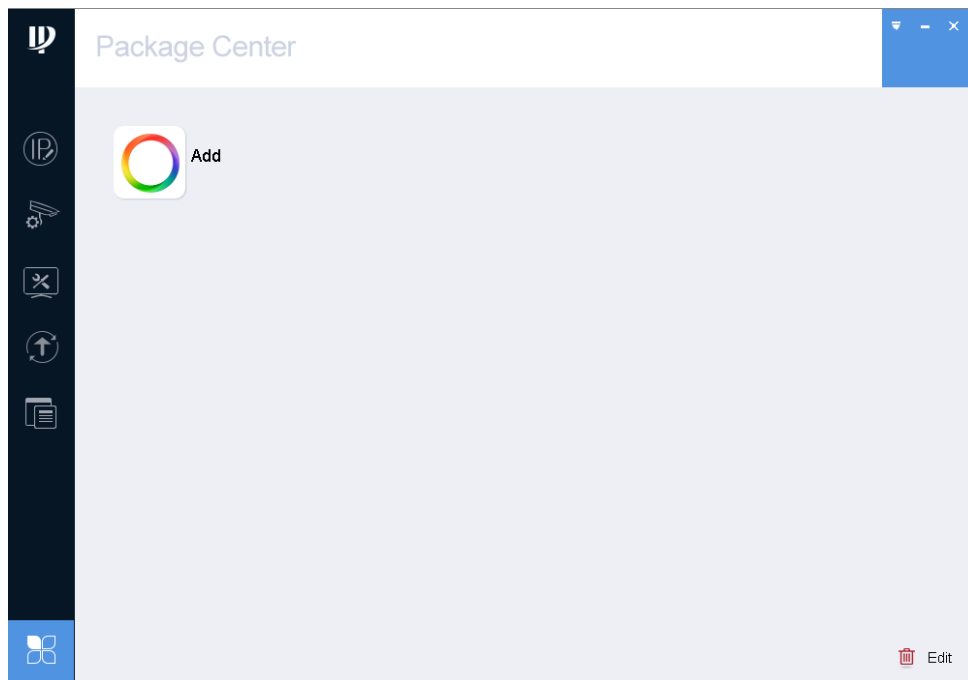


Figure 3-33

Step 2. Click Add, system shows Open interface, see Figure 3-34.

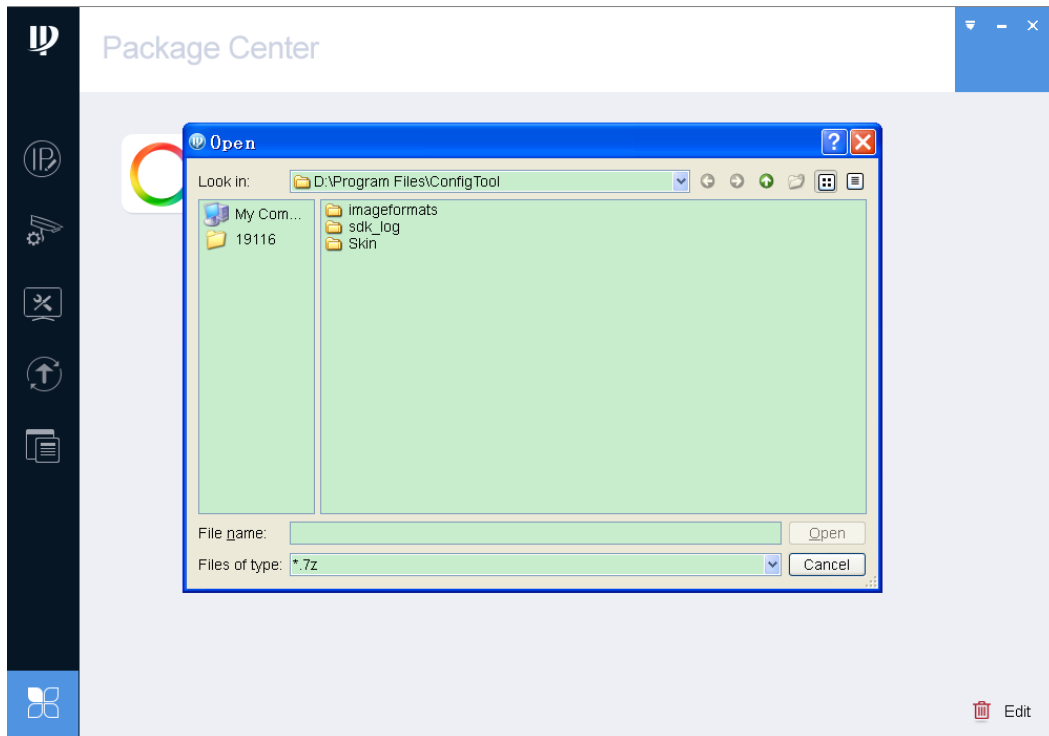


Figure 3-34

Step 3. Select file, click Open. System asks if you want to install.

Step 4. Click OK. System starts to install program, and changes to color after installation is complete.

Note:

- **This manual is for reference only. Slight difference may be found in the user interface.**
- **All the designs and software here are subject to change without prior written notice.**
- **All trademarks and registered trademarks are the properties of their respective owners.**
- **If there is any uncertainty or controversy, please refer to the final explanation of us.**
- **Please visit our website or contact your local service engineer for more information.**