

## View the RTSP stream with VLC media player

---

### Prerequisites

- VLC media player
- IP Camera online
- RTSP port open
- **Camera Feed must be H.264 and cannot be H.265**
- **Camera Feed Bit Rate Should be 4096 or lower**
- Smart Codec can be enabled when using H.264

### Example URLs

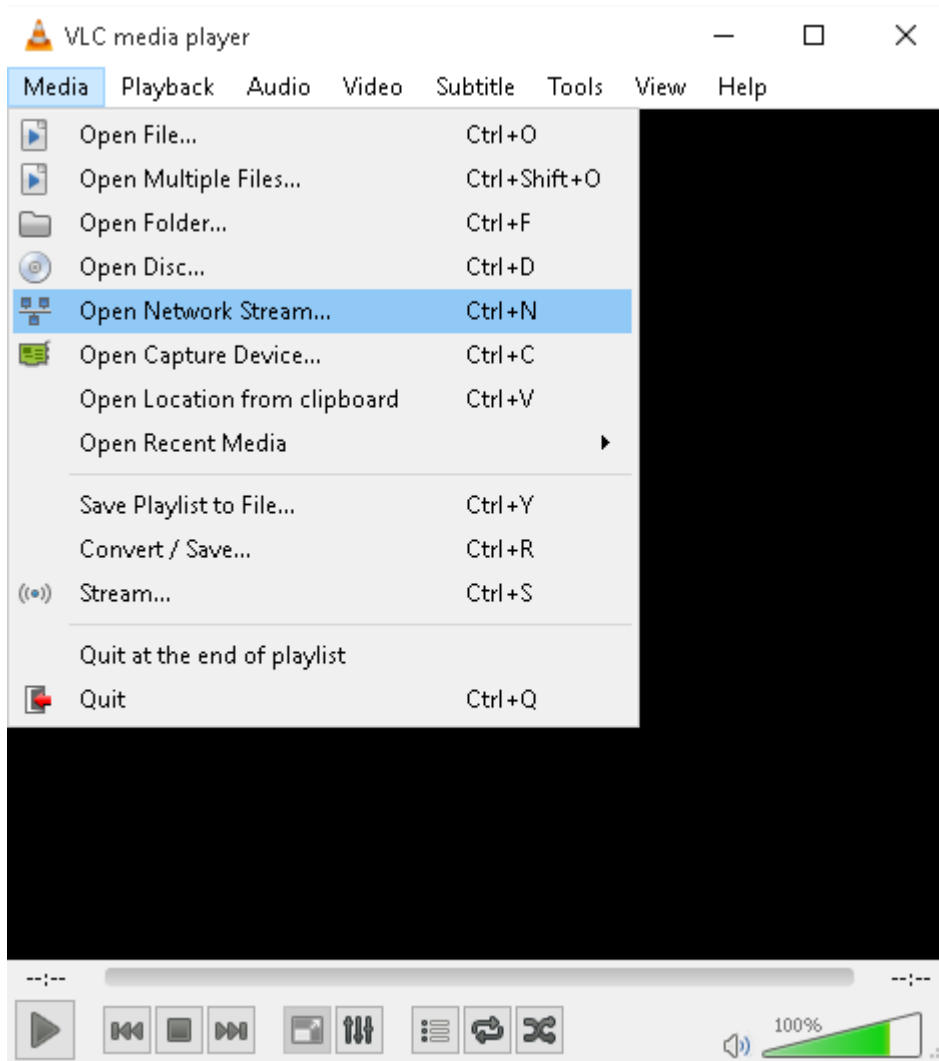
- `rtsp://192.168.2.128:554/cam/realmonitor?channel=1&subtype=0&unicast=true&proto=Onvif`
- `rtsp://admin:admin@10.7.6.67:554/cam/realmonitor?channel=1&subtype=1`
- `rtsp://192.168.2.128:554/live`
  - `admin:admin` = IP camera most current login credentials username:password

### Step by Step Instructions

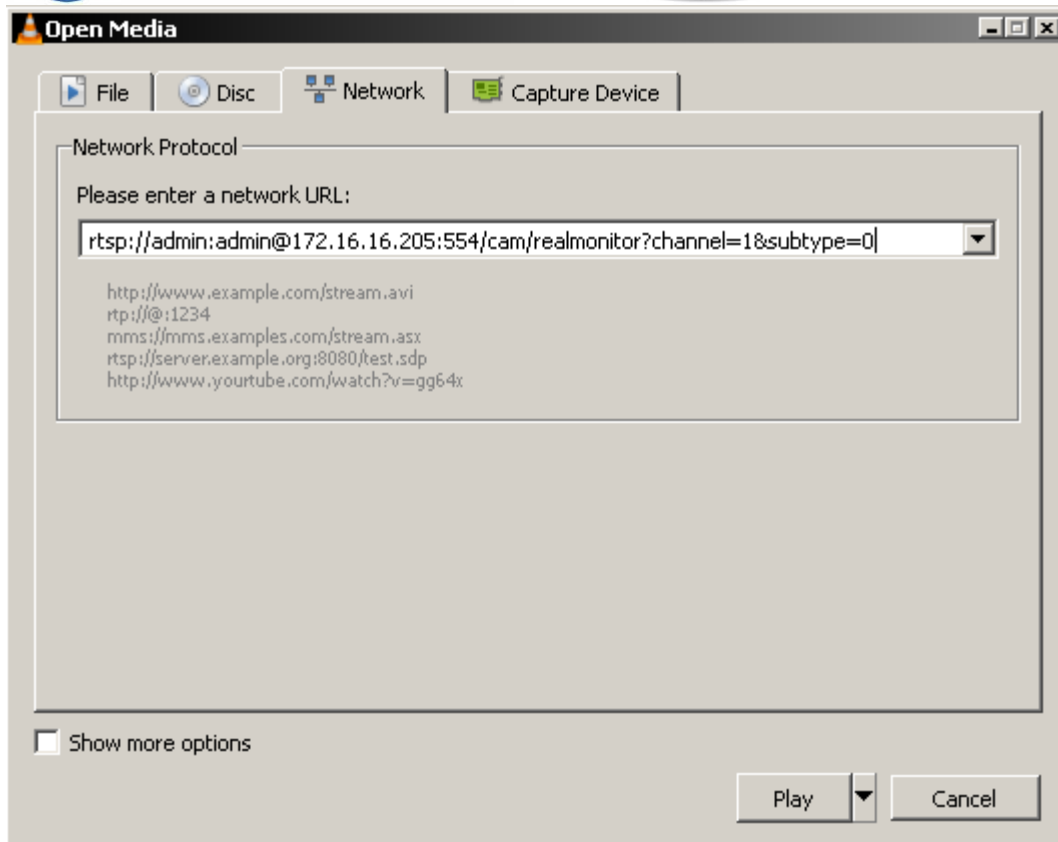
1. Download and install VLC. [Click here to go to VLC Homepage](#)



2. Click Media—Open Network Stream.



3. Input RTSP URL in Network Tab.



4. Click Play button, then the video will display.



About the URL of the RTSP, please see the explanation as follows.

URL Syntax

rtsp://:@:/cam/realmonitor?channel=&subtype=

- : a valid user's username.
- :user's password. (Cannot contain #)
- :the IP address of the IP Camera.
- :the default port is 554. It can be omitted.
- :the channel number. It starts from 1.
- :the stream type. The of main stream is 0, extra stream 1 is 1, extra stream 2 is 2.

For example, we request the extra stream 1 of channel 1,the URL is:

rtsp://admin:admin@10.7.6.67:554/cam/realmonitor?channel=1&subtype=1.



The IP Camera supports both TCP and UDP transmission forms. It also supplies basic authentication and digest authentication ways. The authentication process is similar with 3.2 Authentication.

For the RTSP port, it is 554 in default, If it was changed, please change the port number in the RTSP URL.

For the IPC, you can see the RTSP port in the Web page:

The screenshot shows the 'WEB SERVICE v3.0' interface with a navigation menu on the left and a main content area. The 'Connection' settings are displayed, including fields for Max Connection, TCP Port, UDP Port, HTTP Port, RTSP Port, and HTTPs Port. The RTSP Port field is highlighted with a red box.

Setting	Value	Range
Max Connection	10	(1-20)
TCP Port	40008	(1025-65535)
UDP Port	37778	(1025-65535)
HTTP Port	8092	
RTSP Port	554	
HTTPs On	<input type="checkbox"/>	
HTTPs Port	443	

Buttons: Default, Refresh, Save